

RDA RESOLUTION 26-02

**A RESOLUTION OF THE SOUTH WEBER CITY COMMUNITY
DEVELOPMENT AND RENEWAL AGENCY (RDA)
ADOPTING THE FISCAL YEAR 2027 FINAL BUDGET**

WHEREAS, South Weber City Community Development and Renewal Agency (RDA) Board approved the Old Fort Community Reinvestment Area Plan and drafted a multi-year budget; and

WHEREAS, a tentative budget for fiscal year 2027 was approved on May 12, 2026 and subsequently a public hearing to receive feedback was held on May 26, 2026; and

WHEREAS, the secretary presents the tentative budget with no changes as the final budget;

NOW THEREFORE BE IT RESOLVED by the Governing Board of the South Weber City Community Development and Renewal Agency as follows:



Section 1. Adoption: The Final RDA Budget for Fiscal Year 2027 as attached in **Exhibit 1** is hereby adopted.


Section 2: Repealer Clause: All ordinances or resolutions or parts thereof, which are in conflict herewith, are hereby repealed.

PASSED AND ADOPTED by the RDA Board of South Weber, Davis County, on the 9th day of May 2026.

Roll call vote is as follows:

Board Member Halverson	FOR	AGAINST
Board Member Petty	FOR	AGAINST
Chair Westbrook	FOR	AGAINST
Board Member Dills	FOR	AGAINST
Board Member Davis	FOR	AGAINST
Board Member Winsor	FOR	AGAINST



Rod Westbrook, Chair

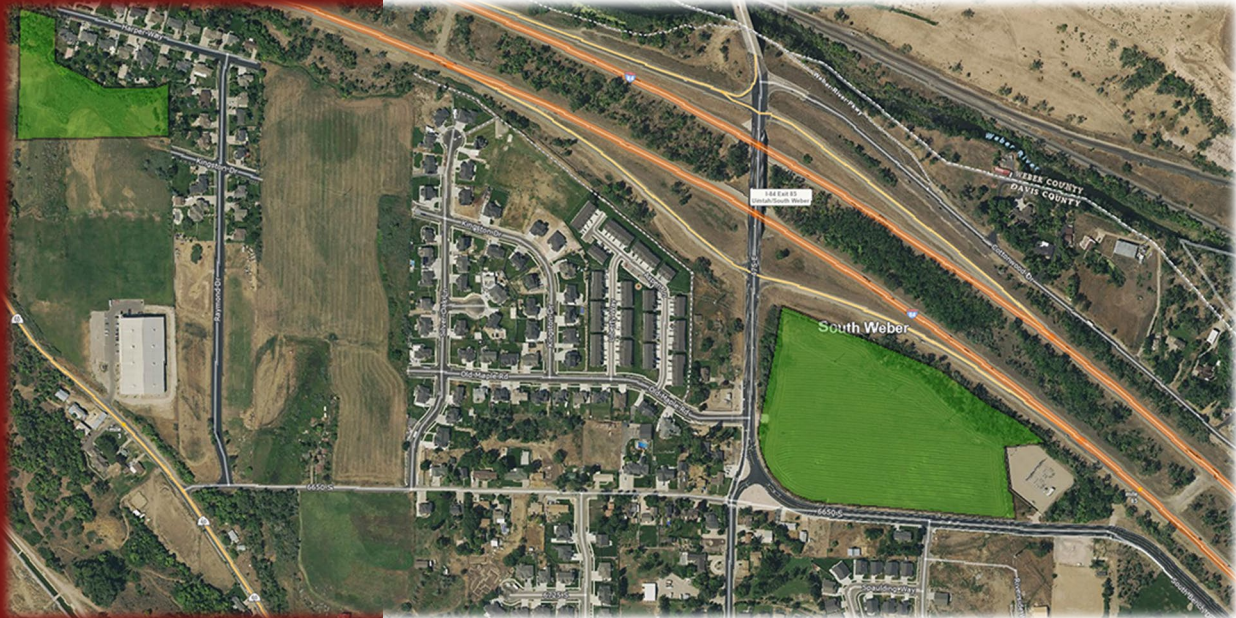
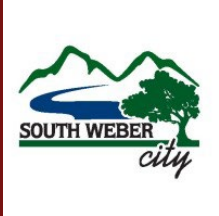

Attest: Lisa Smith, Secretary

Fiscal Year 2027

Old Fort Community

Reinvestment Area

Project Area Budget



South Weber Community Development and Renewal Agency
Old Fort Community Reinvestment Area
Projected Multi-Year Budget

Valuation Analysis & Base Year Tax Revenue											
Project Years	10	1	2	3	4	5	6	7	8	9	10
RDA Fiscal Year		2025	2026	2027	2028	2029	2030	2031	2032	2033	2034
Tax Increment Year		2024	2025	2026	2027	2028	2029	2030	2031	2032	2033
Total Base Year Value		\$1,677,304	\$1,677,304	\$1,677,304	\$1,677,304	\$1,677,304	\$1,677,304	\$1,677,304	\$1,677,304	\$1,677,304	\$1,677,304
Total Assessed Value		\$18,890,405	\$18,812,823	\$18,740,470	\$18,700,455	\$18,682,259	\$18,677,304	\$18,677,304	\$18,677,304	\$18,677,304	\$18,677,304
Total Incremental Value		\$17,213,101	\$17,135,519	\$17,063,166	\$17,023,151	\$17,004,955	\$17,000,000	\$17,000,000	\$17,000,000	\$17,000,000	\$17,000,000

Base Year Tax Revenues to Taxing Entities	2023 Tax Rate	Total	NPV										
Davis County	0.001152	\$19,323	\$14,920	\$1,932	\$1,932	\$1,932	\$1,932	\$1,932	\$1,932	\$1,932	\$1,932	\$1,932	\$1,932
Multicounty Assessing & Collecting Levy	0.000015	\$252	\$194	\$25	\$25	\$25	\$25	\$25	\$25	\$25	\$25	\$25	\$25
County Assessing & Collecting Levy	0.000131	\$2,197	\$1,697	\$220	\$220	\$220	\$220	\$220	\$220	\$220	\$220	\$220	\$220
Davis County School District	0.006228	\$104,462	\$80,663	\$10,446	\$10,446	\$10,446	\$10,446	\$10,446	\$10,446	\$10,446	\$10,446	\$10,446	\$10,446
South Weber City	0.001330	\$22,308	\$17,226	\$2,231	\$2,231	\$2,231	\$2,231	\$2,231	\$2,231	\$2,231	\$2,231	\$2,231	\$2,231
Weber Basin Water Conservancy District	0.000200	\$3,355	\$2,590	\$335	\$335	\$335	\$335	\$335	\$335	\$335	\$335	\$335	\$335
Davis County Mosquito Abatement District	0.000098	\$1,644	\$1,269	\$164	\$164	\$164	\$164	\$164	\$164	\$164	\$164	\$164	\$164
Central Weber Sewer Improvement District	0.000523	\$8,772	\$6,774	\$877	\$877	\$877	\$877	\$877	\$877	\$877	\$877	\$877	\$877
County Library	0.000234	\$3,925	\$3,031	\$392	\$392	\$392	\$392	\$392	\$392	\$392	\$392	\$392	\$392
Total	0.009911	\$166,238	\$128,364	\$16,624	\$16,624	\$16,624	\$16,624	\$16,624	\$16,624	\$16,624	\$16,624	\$16,624	\$16,624

Participation Rates													
Davis County				50%	50%	50%	50%	50%	50%	50%	50%	50%	50%
Multicounty Assessing & Collecting Levy				50%	50%	50%	50%	50%	50%	50%	50%	50%	50%
County Assessing & Collecting Levy				50%	50%	50%	50%	50%	50%	50%	50%	50%	50%
Davis County School District				50%	50%	50%	50%	50%	50%	50%	50%	50%	50%
South Weber City				100%	100%	100%	100%	100%	100%	100%	100%	100%	100%
Weber Basin Water Conservancy District				50%	50%	50%	50%	50%	50%	50%	50%	50%	50%
Davis County Mosquito Abatement District				50%	50%	50%	50%	50%	50%	50%	50%	50%	50%
Central Weber Sewer Improvement District				50%	50%	50%	50%	50%	50%	50%	50%	50%	50%
County Library				50%	50%	50%	50%	50%	50%	50%	50%	50%	50%

Tax Increment Calculations													
RDA Fiscal Year		2025	2026	2027	2028	2029	2030	2031	2032	2033	2034		
Tax Increment Year		2024	2025	2026	2027	2028	2029	2030	2031	2032	2033		
Total Incremental Revenues	2023 Tax Rate	Total	NPV										
Davis County	0.001152	\$196,347	\$151,687	\$19,829	\$19,740	\$19,657	\$19,611	\$19,590	\$19,584	\$19,584	\$19,584	\$19,584	\$19,584
Multicounty Assessing & Collecting Levy	0.000015	\$2,557	\$1,975	\$258	\$257	\$256	\$255	\$255	\$255	\$255	\$255	\$255	\$255
County Assessing & Collecting Levy	0.000131	\$22,328	\$17,249	\$2,255	\$2,245	\$2,235	\$2,230	\$2,228	\$2,227	\$2,227	\$2,227	\$2,227	\$2,227
Davis County School District	0.006228	\$1,061,500	\$820,059	\$107,203	\$106,720	\$106,269	\$106,020	\$105,907	\$105,876	\$105,876	\$105,876	\$105,876	\$105,876
South Weber City	0.001330	\$226,685	\$175,125	\$22,893	\$22,790	\$22,694	\$22,641	\$22,617	\$22,610	\$22,610	\$22,610	\$22,610	\$22,610
Weber Basin Water Conservancy District	0.000200	\$34,088	\$26,335	\$3,443	\$3,427	\$3,413	\$3,405	\$3,401	\$3,400	\$3,400	\$3,400	\$3,400	\$3,400
Davis County Mosquito Abatement District	0.000098	\$16,703	\$12,904	\$1,687	\$1,679	\$1,672	\$1,668	\$1,666	\$1,666	\$1,666	\$1,666	\$1,666	\$1,666
Central Weber Sewer Improvement District	0.000523	\$89,140	\$68,865	\$9,002	\$8,962	\$8,924	\$8,903	\$8,894	\$8,891	\$8,891	\$8,891	\$8,891	\$8,891
County Library	0.000234	\$39,883	\$30,811	\$4,028	\$4,010	\$3,993	\$3,983	\$3,979	\$3,978	\$3,978	\$3,978	\$3,978	\$3,978
Total	0.009911	\$1,689,230	\$1,305,010	\$170,599	\$169,830	\$169,113	\$168,716	\$168,536	\$168,487	\$168,487	\$168,487	\$168,487	\$168,487

Tax Increment Calculations

RDA Fiscal Year				2025	2026	2027	2028	2029	2030	2031	2032	2033	2034
Tax Increment Year				2024	2025	2026	2027	2028	2029	2030	2031	2032	2033
Incremental Tax Revenues to Taxing Entities				2023 Tax Rate	Total	NPV							
Davis County	0.001152	\$98,173	\$75,844	\$9,915	\$9,870	\$9,828	\$9,805	\$9,795	\$9,792	\$9,792	\$9,792	\$9,792	\$9,792
Multicounty Assessing & Collecting Levy	0.000015	\$1,278	\$988	\$129	\$129	\$128	\$128	\$128	\$128	\$128	\$128	\$128	\$128
County Assessing & Collecting Levy	0.000131	\$11,164	\$8,625	\$1,127	\$1,122	\$1,118	\$1,115	\$1,114	\$1,114	\$1,114	\$1,114	\$1,114	\$1,114
Davis County School District	0.006228	\$530,750	\$410,029	\$53,602	\$53,360	\$53,135	\$53,010	\$52,953	\$52,938	\$52,938	\$52,938	\$52,938	\$52,938
South Weber City	0.001330	\$0	\$0	\$0	\$0	\$0	\$0	\$0	\$0	\$0	\$0	\$0	\$0
Weber Basin Water Conservancy District	0.000200	\$17,044	\$13,167	\$1,721	\$1,714	\$1,706	\$1,702	\$1,700	\$1,700	\$1,700	\$1,700	\$1,700	\$1,700
Davis County Mosquito Abatement District	0.000098	\$8,352	\$6,452	\$843	\$840	\$836	\$834	\$833	\$833	\$833	\$833	\$833	\$833
Central Weber Sewer Improvement District	0.000523	\$44,570	\$34,432	\$4,501	\$4,481	\$4,462	\$4,452	\$4,447	\$4,446	\$4,446	\$4,446	\$4,446	\$4,446
County Library	0.000234	\$19,941	\$15,406	\$2,014	\$2,005	\$1,996	\$1,992	\$1,990	\$1,989	\$1,989	\$1,989	\$1,989	\$1,989
Total	0.009911	\$731,272	\$564,942	\$73,853	\$73,520	\$73,210	\$73,038	\$72,960	\$72,939	\$72,939	\$72,939	\$72,939	\$72,939
Incremental Tax Revenues to Agency				2023 Tax Rate	Total	NPV							
Davis County	0.001152	\$98,173	\$75,844	\$9,915	\$9,870	\$9,828	\$9,805	\$9,795	\$9,792	\$9,792	\$9,792	\$9,792	\$9,792
Multicounty Assessing & Collecting Levy	0.000015	\$1,278	\$988	\$129	\$129	\$128	\$128	\$128	\$128	\$128	\$128	\$128	\$128
County Assessing & Collecting Levy	0.000131	\$11,164	\$8,625	\$1,127	\$1,122	\$1,118	\$1,115	\$1,114	\$1,114	\$1,114	\$1,114	\$1,114	\$1,114
Davis County School District	0.006228	\$530,750	\$410,029	\$53,602	\$53,360	\$53,135	\$53,010	\$52,953	\$52,938	\$52,938	\$52,938	\$52,938	\$52,938
South Weber City	0.001330	\$226,685	\$175,125	\$22,893	\$22,790	\$22,694	\$22,641	\$22,617	\$22,610	\$22,610	\$22,610	\$22,610	\$22,610
Weber Basin Water Conservancy District	0.000200	\$17,044	\$13,167	\$1,721	\$1,714	\$1,706	\$1,702	\$1,700	\$1,700	\$1,700	\$1,700	\$1,700	\$1,700
Davis County Mosquito Abatement District	0.000098	\$8,352	\$6,452	\$843	\$840	\$836	\$834	\$833	\$833	\$833	\$833	\$833	\$833
Central Weber Sewer Improvement District	0.000523	\$44,570	\$34,432	\$4,501	\$4,481	\$4,462	\$4,452	\$4,447	\$4,446	\$4,446	\$4,446	\$4,446	\$4,446
County Library	0.000234	\$19,941	\$15,406	\$2,014	\$2,005	\$1,996	\$1,992	\$1,990	\$1,989	\$1,989	\$1,989	\$1,989	\$1,989
Total	0.009911	\$957,957	\$740,067	\$96,746	\$96,310	\$95,904	\$95,679	\$95,576	\$95,549	\$95,549	\$95,549	\$95,549	\$95,549

Agency Budget												
RDA Fiscal Year			2025	2026	2027	2028	2029	2030	2031	2032	2033	2034
Tax Increment Year			2024	2025	2026	2027	2028	2029	2030	2031	2032	2033
Revenues												
Incremental Tax Revenues to Agency												
	Total	NPV										
Davis County	\$98,173	\$75,844	\$9,915	\$9,870	\$9,828	\$9,805	\$9,795	\$9,792	\$9,792	\$9,792	\$9,792	\$9,792
Multicounty Assessing & Collecting Levy	\$1,278	\$988	\$129	\$129	\$128	\$128	\$128	\$128	\$128	\$128	\$128	\$128
County Assessing & Collecting Levy	\$11,164	\$8,625	\$1,127	\$1,122	\$1,118	\$1,115	\$1,114	\$1,114	\$1,114	\$1,114	\$1,114	\$1,114
Davis County School District	\$530,750	\$410,029	\$53,602	\$53,360	\$53,135	\$53,010	\$52,953	\$52,938	\$52,938	\$52,938	\$52,938	\$52,938
South Weber City	\$226,685	\$175,125	\$22,893	\$22,790	\$22,694	\$22,641	\$22,617	\$22,610	\$22,610	\$22,610	\$22,610	\$22,610
Weber Basin Water Conservancy District	\$17,044	\$13,167	\$1,721	\$1,714	\$1,706	\$1,702	\$1,700	\$1,700	\$1,700	\$1,700	\$1,700	\$1,700
Davis County Mosquito Abatement District	\$8,352	\$6,452	\$843	\$840	\$836	\$834	\$833	\$833	\$833	\$833	\$833	\$833
Central Weber Sewer Improvement District	\$44,570	\$34,432	\$4,501	\$4,481	\$4,462	\$4,452	\$4,447	\$4,446	\$4,446	\$4,446	\$4,446	\$4,446
County Library	\$19,941	\$15,406	\$2,014	\$2,005	\$1,996	\$1,992	\$1,990	\$1,989	\$1,989	\$1,989	\$1,989	\$1,989
Total	\$957,957	\$740,067	\$96,746	\$96,310	\$95,904	\$95,679	\$95,576	\$95,549	\$95,549	\$95,549	\$95,549	\$95,549
Expenditures												
	Total	NPV										
<i>Redevelopment Agency Administrative Percent</i>			2.5%	2.5%	2.5%	2.5%	2.5%	2.5%	2.5%	2.5%	2.5%	2.5%
Administrative Costs	(\$23,949)	(\$18,502)	(\$2,419)	(\$2,408)	(\$2,398)	(\$2,392)	(\$2,389)	(\$2,389)	(\$2,389)	(\$2,389)	(\$2,389)	(\$2,389)
<i>Davis County Administrative Percent (Library & County)</i>			2.5%	2.5%	2.5%	2.5%	2.5%	2.5%	2.5%	2.5%	2.5%	2.5%
Administrative Costs	(\$2,655)	(\$2,281)	(\$298)	(\$297)	(\$296)	(\$295)	(\$295)	(\$295)	(\$295)	(\$295)	(\$295)	(\$295)
<i>Housing Percent</i>			10.0%	10.0%	10.0%	10.0%	10.0%	10.0%	10.0%	10.0%	10.0%	10.0%
Housing Costs	\$0	\$0	\$0	\$0	\$0	\$0	\$0	\$0	\$0	\$0	\$0	\$0
<i>Infrastructure Costs</i>												
Canal Reroute and Piping Main Site	(\$546,920)	(\$464,101)	(\$94,029)	(\$93,606)	(\$93,210)	(\$92,992)	(\$92,892)	(\$80,191)				
Inventory Lot Public Improvements	(\$225,647)	(\$155,871)	\$0	\$0	\$0	\$0	\$0	(\$12,674)	(\$92,865)	(\$92,865)	(\$27,243)	
Remaining Increment for Project Area Development	\$158,487	\$99,312	\$0	\$0	\$0	\$0	\$0	\$0	\$0	\$0	\$65,622	\$92,865

Cap on Tax Increment to Agency	
Davis County	\$98,173
Multicounty Assessing & Collecting Levy	\$1,278
County Assessing & Collecting Levy	\$11,164
Davis County School District	\$530,750
South Weber City	\$226,685
Weber Basin Water Conservancy District	\$17,044
Davis County Mosquito Abatement District	\$8,352
Central Weber Sewer Improvement District	\$44,570
County Library	\$19,941
Total	\$957,957