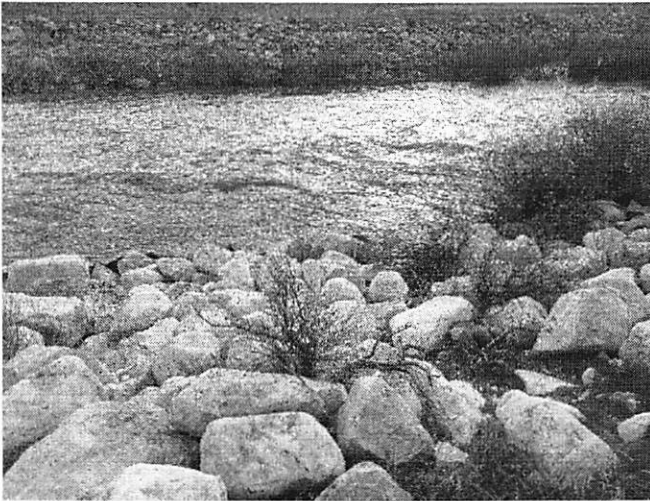


**Comments to South Weber City Council
for 23Apr23Meeting
by Paul A. Sturm**

**Public Comment on Agenda Action Item #6 - Public Hearing on Tentative Budget
Packet Page 51 of 206. Please see comments after snipped text from packet below:**

ABOUT SOUTH WEBER

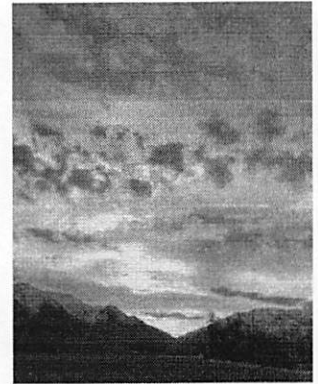
South Weber is located in the northeast corner of Davis County and is bordered in the north by Interstate 84 and the Weber River, east by Highway 89. Hill Air Force base defines the border in the south. Land area equals a total of 4.7 square miles.



The City's proximity to outdoor pursuits such as, fishing, mountain biking, skiing, and lakes while simultaneously being close to shopping added with the city's ability to maintain a small-town vibe brings many to settle here. The city prides itself in its ability to maintain the numerous parks and trails in the city.

Pickleball courts were recently added to one of our parks. A bike track at Canyon Meadows is planned for this year.

Connecting the Shoreline trail system to our trails systems is moving forward.



The southern border of South Weber City is a combination of Hill AFB, Davis County, and Layton City.

The Shoreline trail is actually the Bonneville Shoreline Trial system.