



DAVIS★REMEMBERS

THE 9/11 PROJECT

MAJOR BRENT TAYLOR FOUNDATION

Davis County 9/11 Event Details

Background:

The September 11 attacks, commonly referred to as 9/11, were a series of four coordinated terrorist attacks by the militant Islamist terrorist network al-Qaeda against the United States on Tuesday September 11, 2001. Throughout that morning, four commercial airliners were hijacked mid-flight by 19 al-Qaeda terrorists. Each group had one hijacker who had received flight training and took over control of the aircraft. Their explicit goal was to crash each plane into a prominent American building, causing mass casualties and partial or complete destruction of the targeted buildings.

The attacks resulted in 2,977 fatalities, over 25,000 injuries, and substantial long-term health consequences, in addition to at least \$10 billion in infrastructure and property damage. It remains the deadliest terrorist attack in human history and the single deadliest incident for firefighters and law enforcement officers in the history of the United States, with 340 and 72 killed, respectively.

The Global War on Terrorism refers to an ongoing international military campaign launched by the United States government following the September 11 attacks. The targets of the campaign are primarily Islamist groups located throughout the world, with the most prominent groups being al-Qaeda, as well as the Islamic State and their various franchise groups.

Event Summary:

To honor those lost and effected by the 9/11 attacks and past and present Police, Fire, Military, Medical, and First Responders, the Davis County community pledges a week of 9/11 volunteer support for a commemorative community event that includes: (1) An indoor memorial walk-thru media display of the events of 9/11 and subsequent War on Terror responses, (2) An indoor community gathering center with walk-up booths to meet Police, Fire, Military, Medical, and First Responders, Historical, Americana Artifacts, Collections, Charities, and Community Service Activists and a (3) Parking lot Touch-a-Truck event.

Participants:

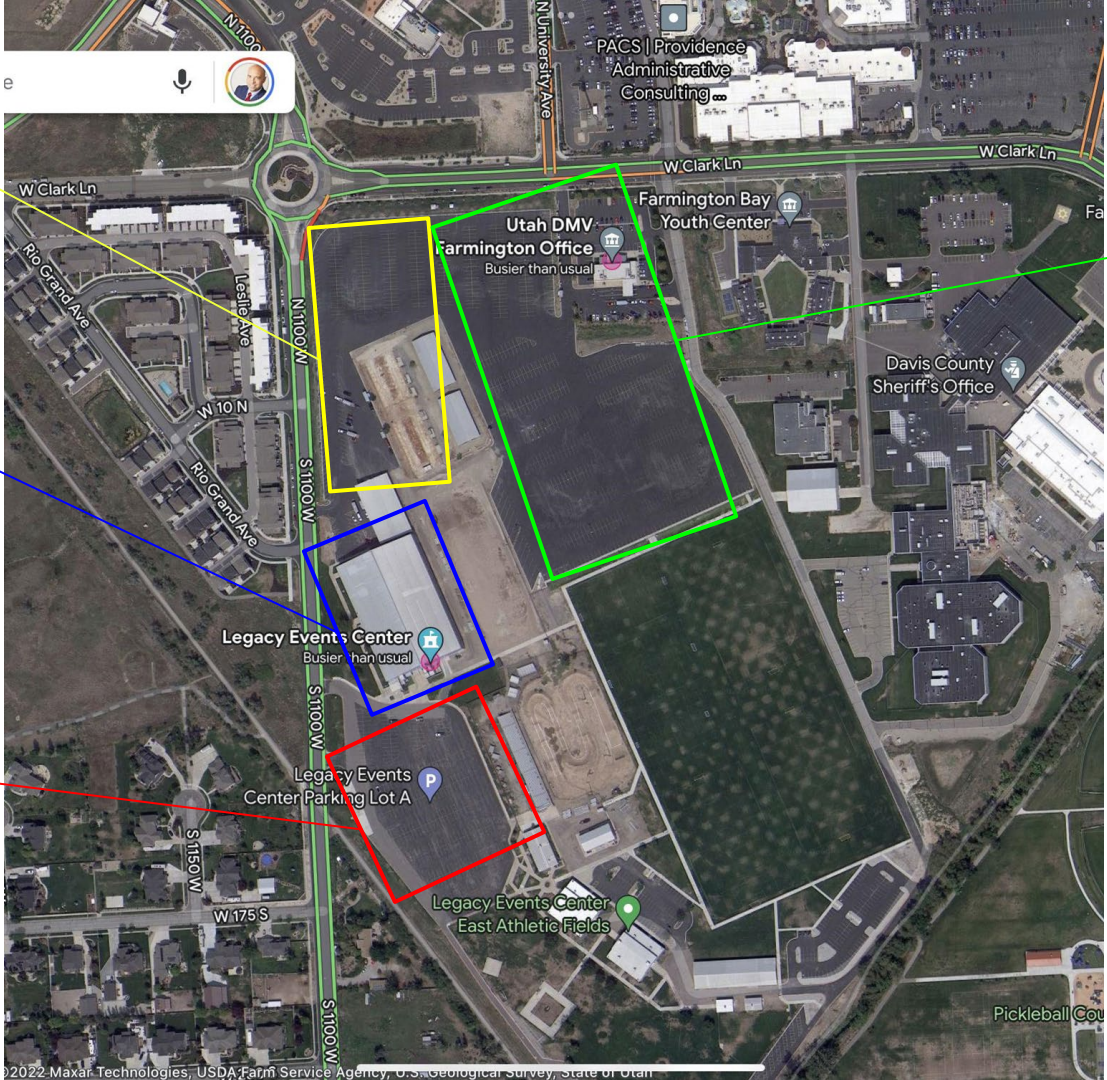
Participants include free entrance for all members of the local and surrounding communities. School field trips are encouraged. Volunteers to help setup, manage, and take down the event. Local businesses, organizations, and individuals to provide materials support and financially sponsor the event.

Volunteer
Parking

9/11 Memorial
& Community
Hall

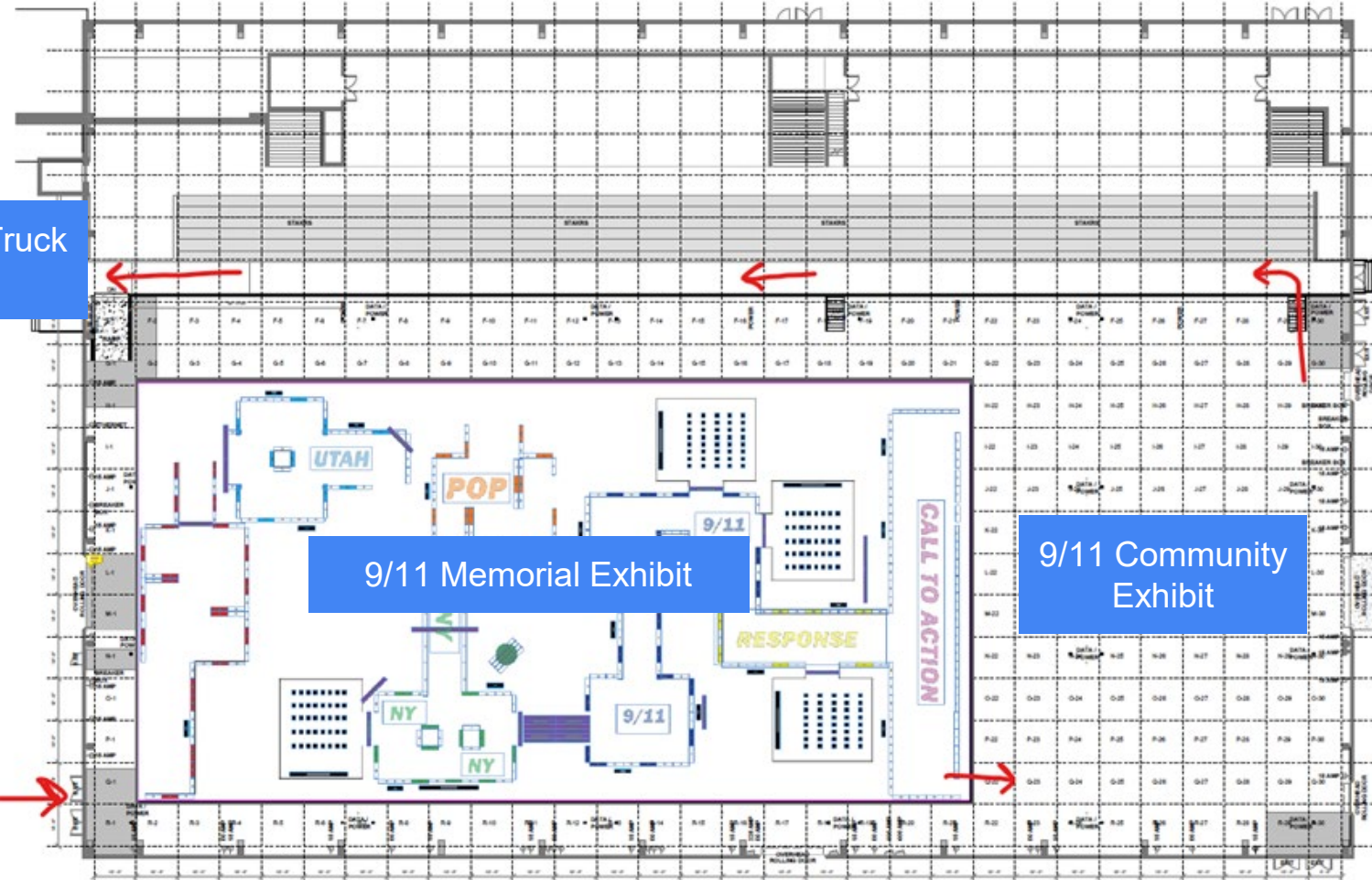
Touch-a-Truck
(Medical, Police,
Fire, Military
Vehicles)

Public Parking



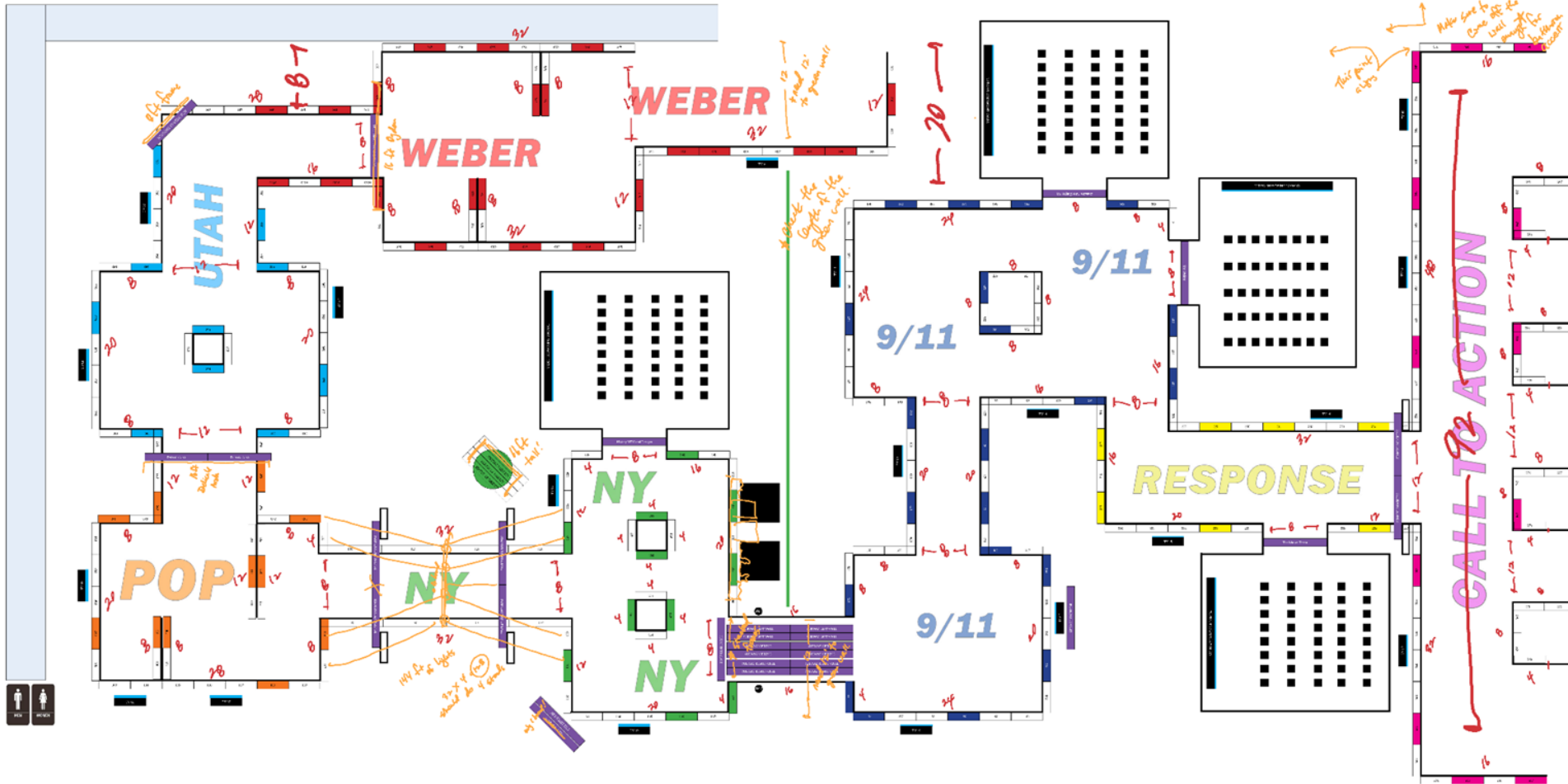


Touch-a-Truck
Event



9/11 Memorial Exhibit

9/11 Community Exhibit





2022 Davis County 9/11 Event Information

Setup:	SUN 9/4 @ 4:00PM to 9:00PM
	MON 9/5 @ 8:00AM to 9:00PM
	TUE 9/6 @ 8:00AM to 4:00 PM
Opening Night:	TUE 9/6 Evening 6:00PM to 8:00PM
Open to the Schools:	WED 9/7 @ 9:00AM to 2:00PM THU 9/8 @ 9:00AM to 2:00PM FRI 9/9 @ 9:00AM to 2:00PM
Open to the Public:	WED 9/7 @ 4:00PM to 9:00PM THU 9/8 @ 4:00PM to 9:00PM FRI 9/9 @ 4:00PM to 9:00PM SAT 9/10 @ 9:00AM to 9:00PM
Tear Down:	SAT 9/10 @ 9:00PM to 11:00PM

2022 Davis County 9/11 Event Planning General Schedule

MAR 2022	<p>Intro Meetings w/County Location Decision Budget Approvals Fundraising Plans / Potential Donors Community Service Organizations Targets Calendar Review</p>
APR 2022	<p>Location Planning (facilities, security, traffic flow) Key Roles Lock Volunteer Hunting Memorial Design Updates Memorial Resource Planning Fundraising</p>
MAY 2022	<p>Intro Meetings w/Organizations and Businesses Intro Meetings w/Cities Volunteer Hunting Marketing Plan Build Community Exhibit Invitations Extended Event Stage Planning / Identify Potential Performances Memorial Design Updates Memorial Resource Lock Event Stage Coordination / Invites Extended Food Truck Offering Extended Influencers Invites Fundraising</p>

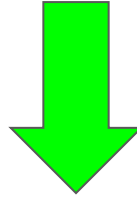
2022 Davis County 9/11 Event Planning General Schedule

JUN 2022	<p>Intro Meetings w/Organizations and Businesses Volunteer Resource Planning Memorial Design Complete Community Exhibit Locked Event Stage Program Locked Food Truck Locked Media Kit Planning Fundraising</p>
JUL 2022	<p>Follow Ups Volunteer Responsibility Invitations Light Advertising Media Kit Execution Fundraising</p>
AUG 2022	<p>Follow Ups Event Flow Review Medium Advertising Volunteer Lock Fundraising</p>
SEP 2022	<p>Final Prep Event Flow Locked Heavy Advertising Fundraising Event</p>

Budget

Item	Estimated Cost	Total
Exhibit Boards	\$110,000	\$110,000
Sound & Lighting	\$20,000	\$130,000
Framework & Build	\$20,000	\$150,000
Community Exhibit Hall	\$5,000	\$155,000
Volunteer Support	\$10,000	\$165,000
Student Support	\$5,000	\$170,000
Marketing & Media	\$20,000	\$190,000
Signage & Display	\$5,000	\$195,000
EVENT TOTAL:		\$195,000

Actual Funded



\$25,000

Remaining



\$170,000

GOAL!

Financial Sponsors





DAVIS★REMEMBERS

THE 9/11 PROJECT

MAJOR BRENT TAYLOR FOUNDATION



South Weber

February 8, 2022 to May 23, 2022

Introduction

- ▶ Sgt. Pope

 - Has been in EMS for 21 years

 - Has been a LEO and served at the SO for 15 years

 - Has been assigned to South Weber

Introduction

- ▶ Elizabeth Pinto
 - ▶ Criminal Analyst
- ▶ Danielle Rodriguez
 - ▶ Victim Services Coordinator

Staffing Hours and Performance

South Weber 2/8/22 - 5/23/22

Weekly Contract Hours

#	Week	Weekly Total
1	Feb 8 - Feb 14	87
2	Feb 15 - Feb 21	93
3	Feb 22 - Feb 28	84
4	March 1 - March 7	72
5	March 8 - March 14	84
6	March 15 - March 21	111
7	March 21 - March 28	40
8	March 29 - April 4	59
9	April 5 - April 11	84
10	April 12 - April 18	96
11	April 19 - April 25	90
12	April 26 - May 2	72
13	May 3 - May 9	90
14	May 10 - May 16	86
15	May 17 - May 23	112
Total hours		972

Weekly Avg.
Total

84.0

Work Performance

Calls	Arrests	Traffic Stops	Radar Enforcement
909	9	226	90

53.9 % of calls Self Initiated

Significant Events

Significant Events

April 27, 2022

0505 hrs / NB 89 South Weber Drive, South Weber / Evade

Deputy Ryerson conducted a pursuit of a vehicle, a white BMW, that had fled from UHP. The vehicle had intentionally swerved toward Deputy Ryerson while he was stationary on NB 89. The pursuit went into Weber County and was discontinued without apprehending the suspects. Later Weber County was able to locate and pursue the vehicle. The vehicle crashed and two passengers were detained. The driver was still outstanding at the end of our shift.

Significant Events

May 23, 2022

1702 hrs / South Weber / Evade - Stolen Veh

An outside agency transferred an active OnStar vehicle tracking situation to DCSO. The vehicle was a gray GMC Canyon and was listed NCIC out of Carbon County. Deputies located the vehicle, but the vehicle actively fled. Pursuit was initiated but quickly concluded due to lack of exigency to continue the pursuit. The vehicle was located shortly after and found unoccupied. Individuals were seen by witnesses running from the area. 2 suspects were found, charged, and booked. Vehicle was processed by the crime lab and towed for safe keep.

Questions or Concerns?

Captain Jason Boydston

801-451-4104

Sergeant Chris Pope

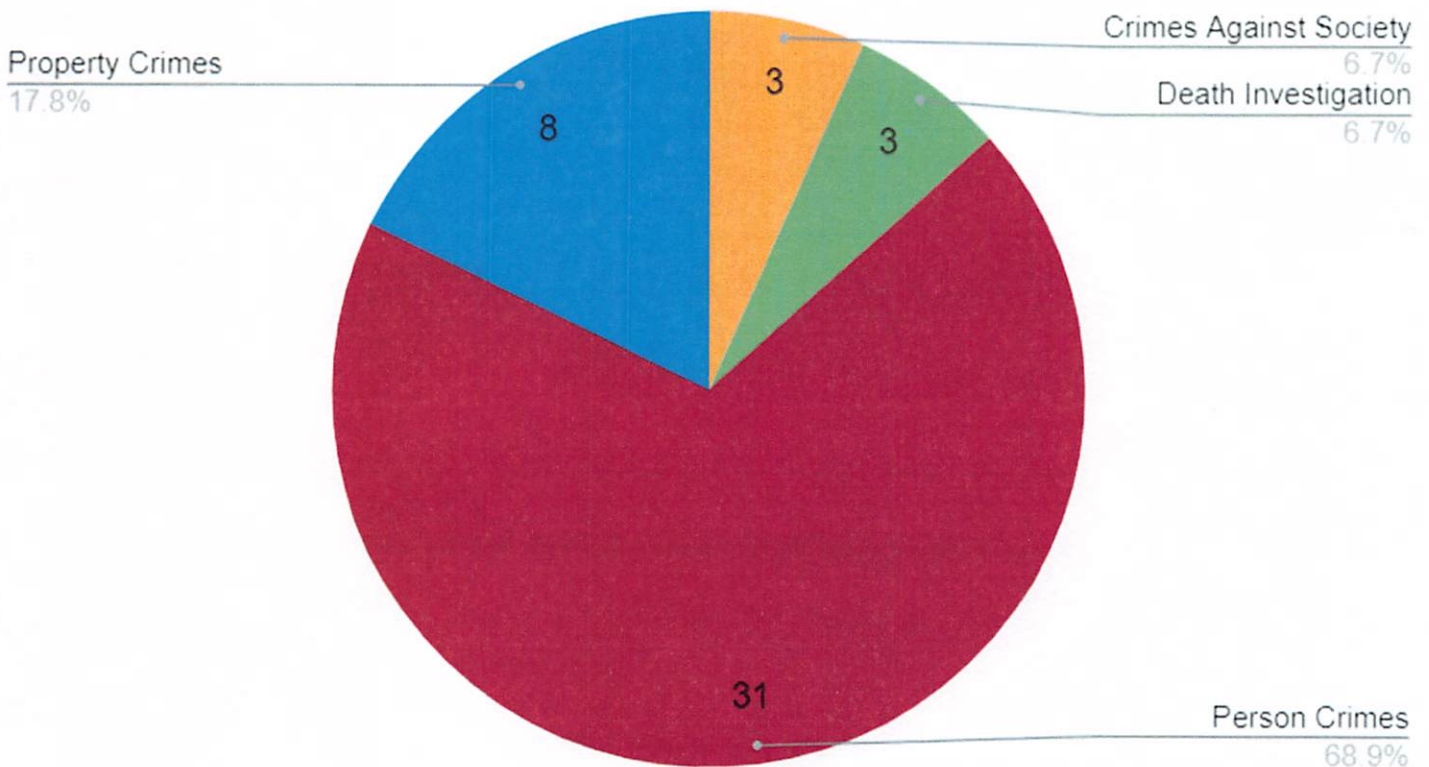
Cell 801-541-0184



SOUTH WEBER 2022 ANALYTICS January 2022 – May 24, 2022

The following statistics represent South Weber cases handled by the Investigations Division of Davis County Sheriff's Office

Percentage of Crime by Type



Davis County Sheriff's Office | Investigative Criminal Analysis and Intelligence | 800 W State St, Farmington, UT | (801)451-4405

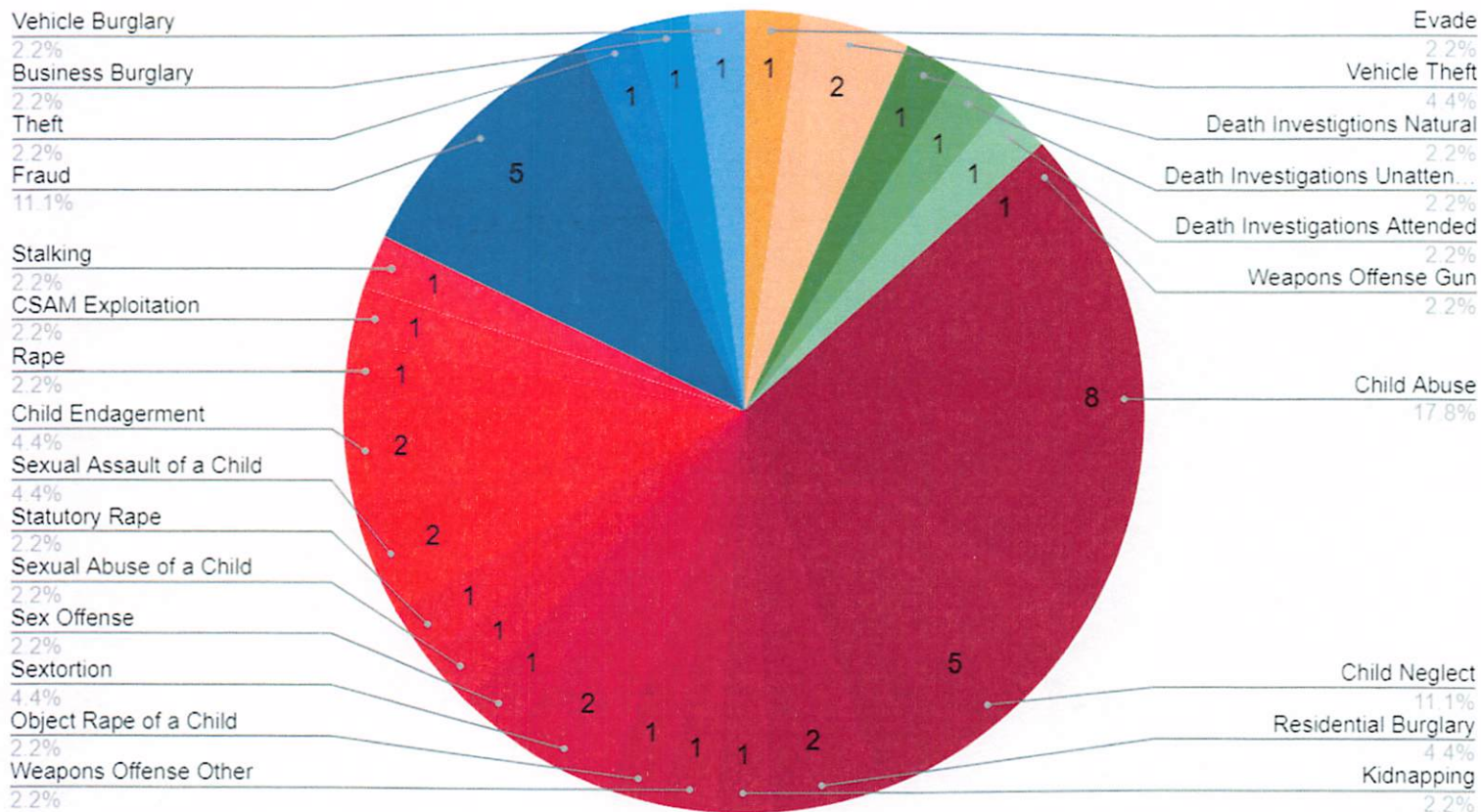
This document is privileged and confidential and is for **LAW ENFORCEMENT USE ONLY**. If you are not the intended recipient, or do not have authorization to view this document, you are hereby notified that any review, disclosure, retention, copying, dissemination, distribution or use of any of the information contained in, or attached to this document is **STRICTLY PROHIBITED**. Please contact the ICAI at epinto@ut.davis.ut.us if you have any questions or additional information.



Davis County Sheriff's Office

Investigative Criminal Analysis and Intelligence

Percentage of Crime by Offense



Legend:

- Crimes Against Persons**
- Crimes Against Property**
- Crimes Against Society**
- Death Investigation**

Davis County Sheriff's Office | Investigative Criminal Analysis and Intelligence | 800 W State St, Farmington, UT | (801)451-4405

This document is privileged and confidential and is for **LAW ENFORCEMENT USE ONLY**. If you are not the intended recipient, or do not have authorization to view this document, you are hereby notified that any review, disclosure, retention, copying, dissemination, distribution or use of any of the information contained in, or attached to this document is **STRICTLY PROHIBITED**. Please contact the ICAI at epinto@ut.davis.ut.us if you have any questions or additional information.



Davis County Sheriff's Office

Investigative Criminal Analysis and Intelligence

Count of Crime by Offense

Evade	2
Vehicle Theft	2
Death Investigations Natural	1
Death Investigations Unattended	1
Death Investigations Attended	1
Weapons Offense Gun	1
Child Abuse	8
Child Neglect	5
Residential Burglary	2
Kidnapping	1
Weapons Offense Other	1
Object Rape of a Child	1
Sextortion	2
Sex Offense	1
Sexual Abuse of a Child	1
Statutory Rape	1
Sexual Assault of a Child	2
Child Endagerment	2
Rape	1
CSAM Exploitation	1
Stalking	1
Fraud	5
Theft	1
Business Burglary	1
Vehicle Burglary	1

Davis County Sheriff's Office | Investigative Criminal Analysis and Intelligence | 800 W State St, Farmington, UT | (801)451-4405

This document is privileged and confidential and is for **LAW ENFORCEMENT USE ONLY**. If you are not the intended recipient, or do not have authorization to view this document, you are hereby notified that any review, disclosure, retention, copying, dissemination, distribution or use of any of the information contained in, or attached to this document is **STRICTLY PROHIBITED**. Please contact the ICAI at epinto@ut.davis.ut.us if you have any questions or additional information.



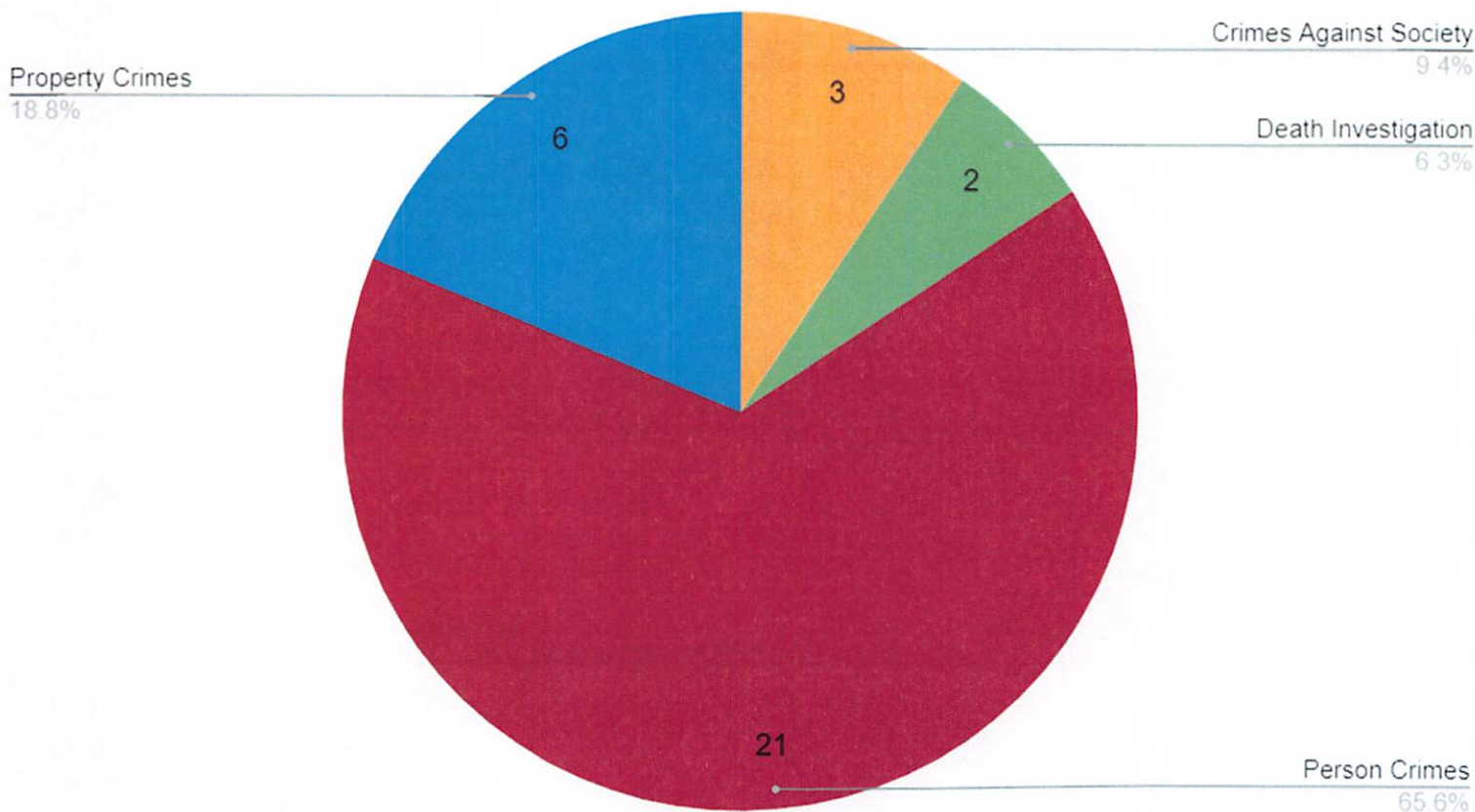
SOUTH WEBER

QUARTERLY ANALYTICS

February 1, 2022 – May 24, 2022

The following statistics represent South Weber cases handled by the Investigations Division of Davis County Sheriff's Office

Percentage of Crime by Type



Davis County Sheriff's Office | Investigative Criminal Analysis and Intelligence | 800 W State St, Farmington, UT | (801)451-4405

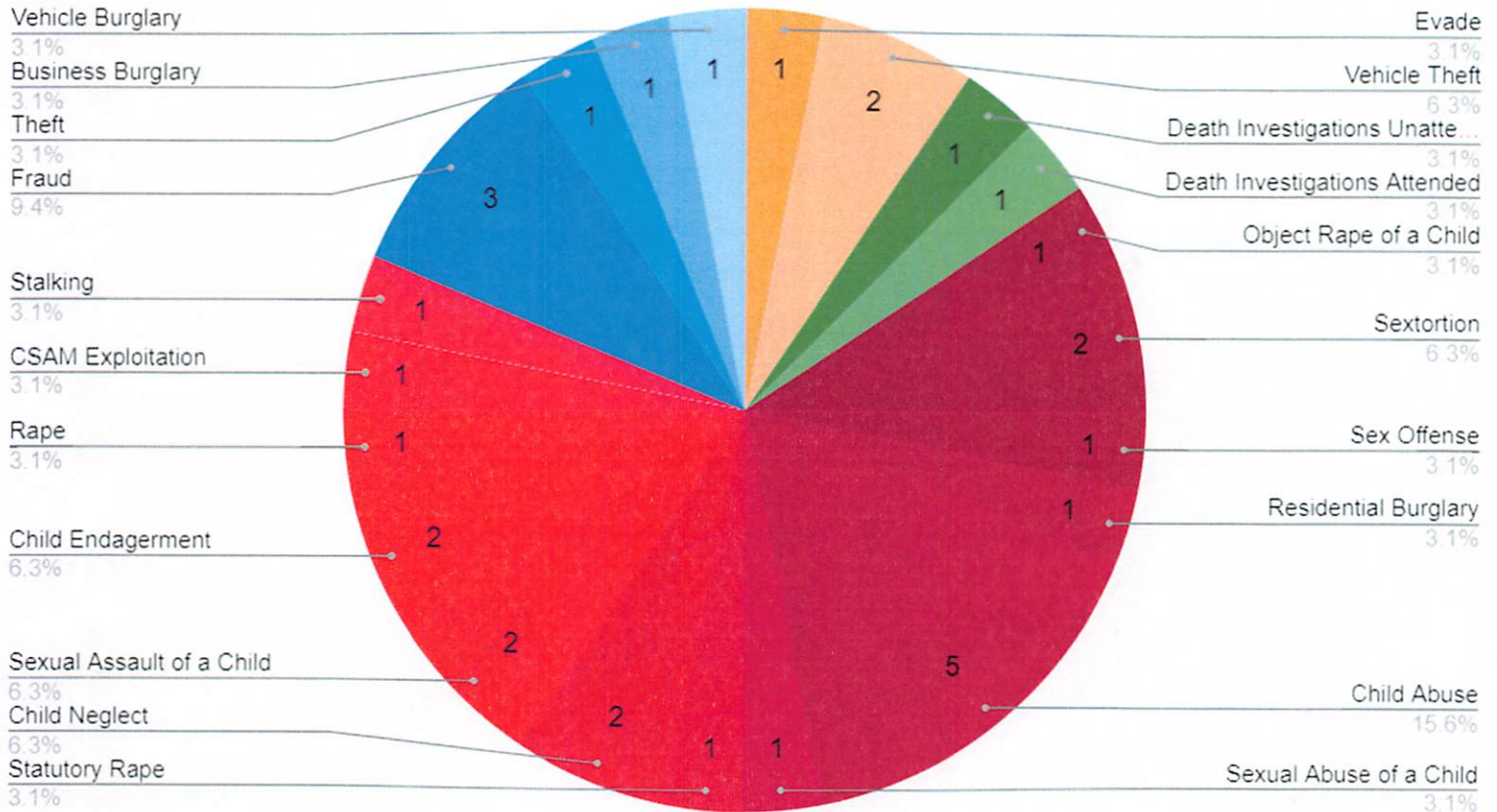
This document is privileged and confidential and is for **LAW ENFORCEMENT USE ONLY**. If you are not the intended recipient, or do not have authorization to view this document, you are hereby notified that any review, disclosure, retention, copying, dissemination, distribution or use of any of the information contained in, or attached to this document is **STRICTLY PROHIBITED**. Please contact the ICAI at epinto@ut.davis.ut.us if you have any questions or additional information.



Davis County Sheriff's Office

Investigative Criminal Analysis and Intelligence

Percentage of Crime by Offense



Legend:

- Crimes Against Persons**
- Crimes Against Property**
- Crimes Against Society**
- Death Investigation**

Davis County Sheriff's Office | Investigative Criminal Analysis and Intelligence | 800 W State St, Farmington, UT | (801)451-4405

This document is privileged and confidential and is for **LAW ENFORCEMENT USE ONLY**. If you are not the intended recipient, or do not have authorization to view this document, you are hereby notified that any review, disclosure, retention, copying, dissemination, distribution or use of any of the information contained in, or attached to this document is **STRICTLY PROHIBITED**. Please contact the ICAI at epinto@ut.davis.ut.us if you have any questions or additional information.



Davis County Sheriff's Office

Investigative Criminal Analysis and Intelligence

Count of Crime by Offense

Evade	1
Vehicle Theft	2
Death Investigations Unattended	1
Death Investigations Attended	1
Object Rape of a Child	1
Sextortion	2
Sex Offense	1
Residential Burglary	1
Child Abuse	5
Sexual Abuse of a Child	1
Statutory Rape	1
Child Neglect	2
Sexual Assault of a Child	2
Child Endagerment	2
Rape	1
CSAM Exploitation	1
Stalking	1
Fraud	3
Theft	1
Business Burglary	1
Vehicle Burglary	1

Davis County Sheriff's Office | Investigative Criminal Analysis and Intelligence | 800 W State St, Farmington, UT |
(801)451-4405

This document is privileged and confidential and is for **LAW ENFORCEMENT USE ONLY**. If you are not the intended recipient, or do not have authorization to view this document, you are hereby notified that any review, disclosure, retention, copying, dissemination, distribution or use of any of the information contained in, or attached to this document is **STRICTLY PROHIBITED**. Please contact the ICAI at epinto@ut.davis.ut.us if you have any questions or additional information.