



# South Weber

July 20, 2021 to November 9, 2021

# Introduction

- ▶ Sgt. Pope

  - Has been in EMS for 20 years

  - Has been a LEO and served at the SO for 14 years

  - Has been assigned to South Weber

# Staffing Hours and Performance

# South Weber Reported Hours

[South Weber Stats](#)

# Significant Events

# Significant Events

## 2102 hrs / 1900 E South Weber Dr. South Weber / Traffic Accident w/injuries

Deputies responded to the area for a head-on traffic accident. The two vehicles involved sustained significant damage and one person was transported for non-life-threatening injuries. After the investigation, a citation was issued for a vehicle being left of center causing the head-on collision

# Significant Events

## 1655 hours / Cornia Dr, South Weber / Suspicious Vehicle

Deputy Alvey was providing an extra patrol of Cornia Dr. and came across an RV parked at the east end of the road. The occupant stated he had spoken with a forest service ranger and that he was allowed to park his RV there. He stated that he was not camping and was only staying there for a few hours a day when not at work. He was not very cooperative and would not provide his name. The state statute states that he would need to be there for 72 consecutive hours to meet the definition of camping. We were able to make contact with a FS ranger for Weber District who stated they had made contact with him and he was told he could not stay overnight. She stated they would check on him tomorrow night. Deputy Alvey stated the owner seemed agitated and aggressive towards LE

# Significant Events

## 1327 hrs / Ungovernable Juvenile

A juvenile male got into an argument with his mother and sister over not getting his way. He had the residence on foot and eventually returned to the residence after deputies went looking for him. He was able to be talked down, and made an agreement with his mother and Deputy Sholly for a punishment for his actions.



# Significant Events

## 0816 hrs / Vehicle Theft

The owner of a vehicle called stating it had been stolen. The vehicle was last seen in the driveway at 2300 night prior. The keys were left in the truck. The vehicle was a 2007 White Ford F150 with black wheel flares and a black carbon fiber hood with scoop. On August 26, the vehicle had been found in Ogden City and was abandoned. The owner retrieved the vehicle which was missing a battery and there were no keys, but otherwise no other damage. The vehicle was processed for possible fingerprints.

# Significant Events

## 0140 hours / Suspicious

An adult male called into dispatch, refusing to identify himself and reported that he had seen a shadow in his neighbor's yard and wanted it checked out. Deputies responded to the area and conducted extra patrol without finding anything suspicious. He then called back in very angry that no one had stopped and entered his neighbor's yard on foot to check. Contact was made with him by phone and he sounded very intoxicated and belligerent. He screamed profanities and expressed his disdain for the situation and the Sheriff's Office in general.

# Significant Events

## 2255 hours / Park and Ride, South Weber/ Suspicious

While conducting extra patrol, Deputies were approached by a citizen who stated that there was a male trying to break into cars .While attempting to locate the male, a second citizen reported that the same male was following them in his car and had tried to hit them. The male was found and identified. It was apparent that he was suffering from a mental health crisis. He was transported to the hospital for an involuntary commitment.

# Significant Events

## 1933 hours / Suicide Threat

Friends and family of an adult individual called in reporting that they were inside of their closed garage with a vehicle running and a gun to their head. After Deputies arrived on scene, it was found that the friends/family were inside of the residence with the subject trying to talk them down. As efforts were being made to safely get the friends/family out of the home, one of the family members threw the gun outside of the front door and escorted the individual out of the house where they were safely taken into custody. The subject was then transported to the hospital for an involuntary mental commitment.

# Significant Events

## 2310 hrs / Stalking

A female employee of Little Caesars called to report a vehicle was at the business after closing and had been there at the same time the previous three nights. She said the vehicle had followed her in the past and she was concerned she was being stalked. The vehicle was located and Michelle Kirby was found to be the driver. She was spoken to about her behaviour and denied stalking anyone and said she would no longer go to Little Caesars. The victim does not want to pursue charges at this time.

# Significant Events

## 0654 hrs / Vehicle Theft

Deputy Olosky took a report for a stolen 2007 Subaru Forester out of S Weber. The complainant stated they parked the vehicle at 2200 last night and woke up this morning and found it missing. She also stated she had left the keys inside the vehicle. Vehicle was listed NCIC.

# Significant Events

## 1937 hrs DUI - Mental Subject

A male was reported as driving intoxicated in the South Weber area near the SW Elementary School. He was reported by multiple callers as driving erratically and nearly hitting juvenile pedestrians. He was stated to be driving a Gold 1999 Ford Crown Vic. Complainants related to the suspect advised that he had verbalized his desire to tie up a cop and slit their throat. He suffers from mental illness. Deputies arrived and searched the area with no contact.

# Significant Events

## 0705 hrs Residential Burglary

Complainant called in at 0700 to report a burglary he witnessed at his residence at 0330. The suspect was seen on camera trying his car door and then entering the storage area of the carport. They removed an empty tool bag, an air compressor and another tool. The suspect set the compressor and other tool down by the road and left momentarily with the tool bag. The complainant retrieved the compressor and put it back and locked the door and went back inside to watch the camera. The suspects returned, saw the items missing and ran off. The complainant noticed a vehicle parked down the street that he did not have detailed information for, which drove off after he went back outside.



# Significant Events

## 0010 hours / Recovered Stolen Vehicle

A resident called in to advise that a group of individuals had just left a vehicle parked in their driveway. Upon getting a disposition for the vehicle, it was found that it had just been stolen out of Clinton and a group of juveniles who had been contacted in South Weber just prior may have been involved. The vehicle was fingerprinted by patrol and the RO responded to pick it up. The information was passed along to Clinton PD for their investigation and follow up will need to be conducted in the area during day time hours to obtain video footage

# Significant Events

## 2011 hrs / Felony DUI, Traffic violations

Deputy Jeppesen stopped a vehicle on Hwy 89 in SW for suspicion of DUI and arrested the driver for suspicion of DUI (felony) as well as other violations after their refusal to take SFST's. A warrant was obtained for their blood which they refused to cooperate with. Their blood was drawn and they were booked into the DCSO jail.

# Significant Events

## 2208 hrs / Weapons offence, Drugs

The driver in a vehicle stopped by Deputy Sholly was found to have warrants, marijuana in the vehicle, and was in possession of a dangerous weapon (brass knuckles) despite his felon status. He was arrested. As it turns out the driver has intimate knowledge of criminal activity that was found to be of interest to Metro Narcotics. As such, he was released from custody and his charges forwarded onto the county attorney. Metro Narcotics will follow up with the subject

# Significant Events

## 1630 hours / Traffic Accident - DUI

Report of a vehicle that hit a power pole and went down into an embankment. The power pole was sheared in half and a live wire was down across the property. The driver was found to have minor injuries but was intoxicated. The driver was arrested for DUI and blew .307. Due to the many computer issues with the state, the driver was released to family on citation. Report is pending due to the server issues.

# Significant Events

## Suicidal subject, Commitment

Deputies responded to the residence of a male that was reported as being intoxicated and suicidal. He was found outside and attempted to evade deputies. He was eventually taken into custody and was determined to be suicidal after statements he had made. He was transported to the hospital and committed under a pink sheet.

# Introduction

- ▶ Sgt. John Peirce
  - ▶ Investigations Sergeant
  - ▶ FBI Child Exploitation Task Force
- ▶ Detective Jason Gardiner
  - ▶ Street Crimes
  - ▶ ATF Project Safe Neighborhood
- ▶ Criminal Analyst Elizabeth Pinto

## South Weber Analysis

# Questions or Concerns?

Captain Taylor West

801-451-4104

Sergeant Chris Pope

Cell 801-541-7880

Office 801-451-4128

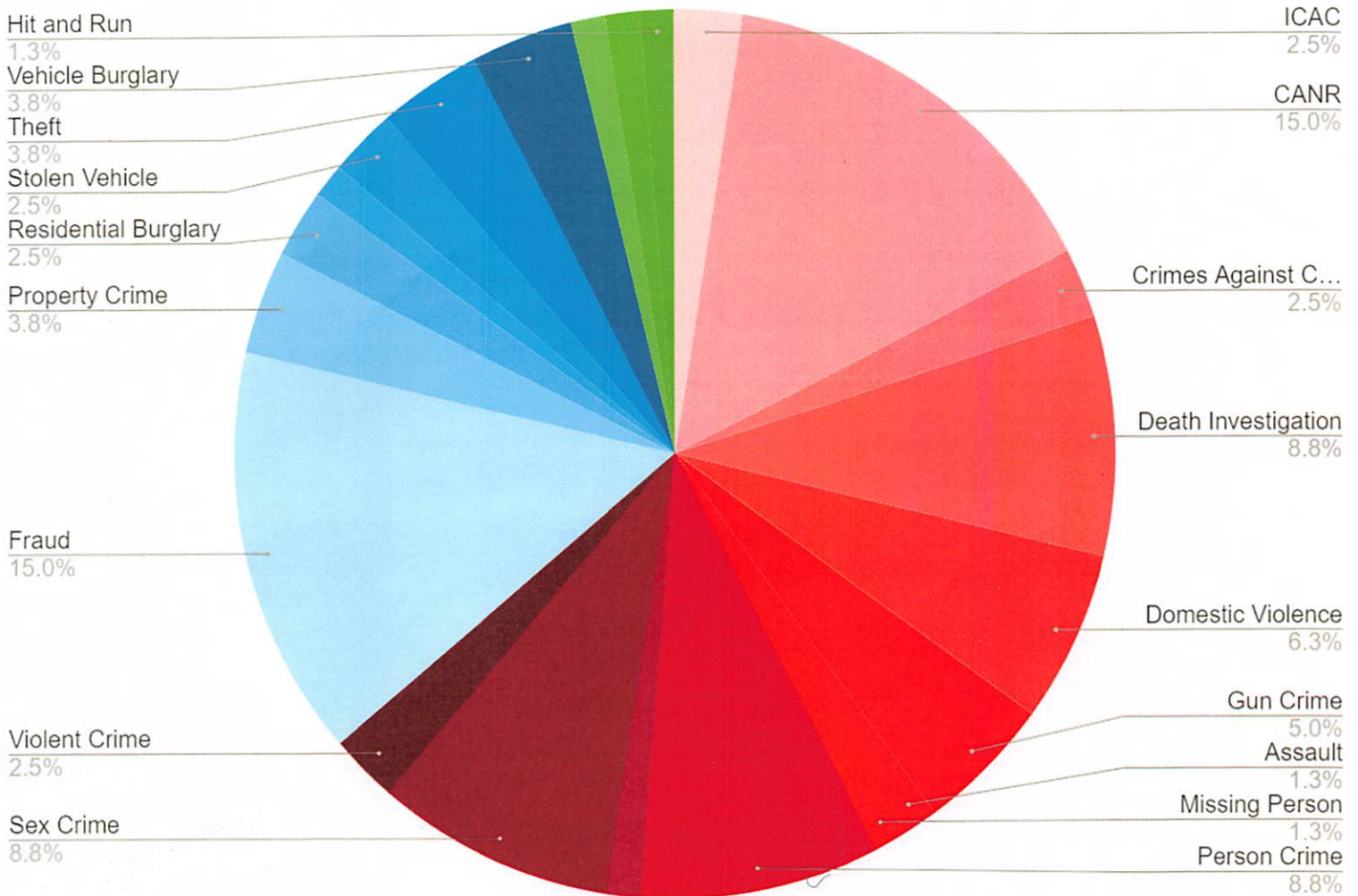




# Davis County Sheriff's Office

## Investigations

### South Weber Crimes Assigned to Investigations 2021



CRIMES AGAINST PERSONS

CRIMES AGAINST PROPERTY

OTHER

**80** Cases assigned to Davis County for Investigation

Well over **1000** hours worked

Cases from South Weber account for **19.3%** of all cases investigated by Davis County

**18** Cases closed with arrest or screened for charges

**51** Cases closed total

# **ANNUAL STORM WATER TRAINING FOR CITY COUNCIL**

**2021**

# INTRODUCTION

- **What is the Storm Water Management Program?**
  - A Storm Water Management Program Plan (SWMP) is a “written plan that is used to describe the various control measures and activities the Permittee will undertake to implement the storm water management plan.”
- **Why is it required?**
  - Required by the EPA and the Utah Division of Water Quality (federal, state)
  - Provides guidance and “measurable” goals
- **Why are we here?**
  - Annual training is required for ALL who deal with storm water related issues

**South Weber City**  
**Storm Water Management Plan**



**November 2021**

Prepared by  
**JONES & ASSOCIATES**  
Consulting Engineers

# INTRODUCTION



# SWMP DEFINITIONS

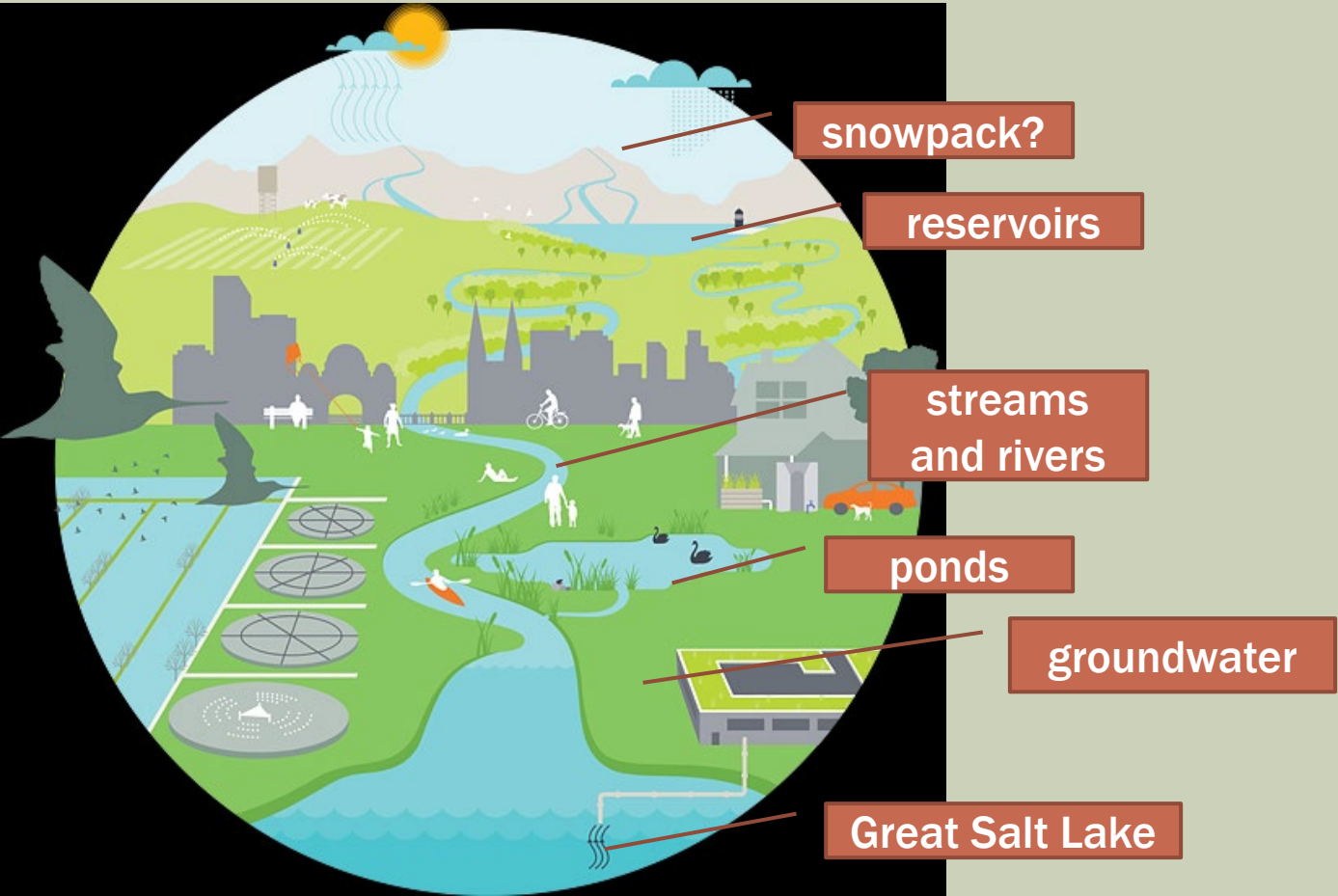
- **Minimum Control Measure (MCM)**
  - “Control Measure” refers to any Best Management Practice or other method **used to prevent or reduce the discharge of pollutants** to Waters of the State.
- **Best Management Practices (BMPs)**
  - **Official Definition:** “...schedules of activities, prohibitions of practices, maintenance procedures, and other management practices to prevent or reduce the pollution of Waters of the State. BMPs also include treatment requirements, operating procedures, and practices to control facility site runoff, spillage or leaks, sludge or waste disposal, or drainage from raw material storage.”
  - **Simply Put:** BMPs are **actions or items** that prevent or reduce water pollution.
  - **Examples?**
    - ordinances, standard operating procedures, street sweeping, silt fencing, inlet protection

# SWMP DEFINITIONS

- Permittee/MS4 (Municipal Separate Storm Sewer System)
  - South Weber
- Waters of the State
  - Official Definition: “... all streams, lakes, ponds, marshes, water-courses, waterways, wells, springs, irrigation systems, drainage systems, and all other bodies or accumulations of water, surface and underground, natural or artificial, public or private which are contained within, flow through, or border upon this state or any portion thereof, except bodies of water confined to and retained within the limits of private property, and which do not develop into or constitute a nuisance, or a public health hazard, or a menace to fish and wildlife which shall not be considered to be ‘Waters of the State’ under this definition (‘UAC’ R317-1-1).”
  - Simply Put: just about **any water conveyance or impoundment**, including groundwater

# SWMP DEFINITIONS

## Utah Waters of the State



# SWMP CONTENTS



- Six Minimum Control Measures (MCMs)
  1. Public Education and Outreach
  2. Public Involvement and Participation
  3. Illicit Discharge Detection and Elimination
  4. Construction Site Storm Water Runoff Control
  5. Long-Term Storm Water Management in New Development and Redevelopment (Post-Construction Storm Water Management)
  6. Pollution Prevention and Good Housekeeping
- Each MCM section contains tasks, goals, and deadlines
- For each MCM, there are Action Items



# MCM 1 – PUBLIC EDUCATION



- Public Education and Outreach - General
  - **Provide and participate** in a variety of stormwater education and outreach programs designed to **build general awareness, reduce or eliminate behaviors and practices** that cause or contribute to adverse stormwater impacts, and **encourage the public to participate** in stewardship activities
  - **Educate** and reach a variety of audiences including residents, institutions and commercial facilities, developers and contractors (construction)
  - Davis County Storm Water Coalition provides some public outreach and education



# MCM 1 – PUBLIC EDUCATION



- Public Education and Outreach - Examples
  - Develop program for installation of curb markers
    - Scout project
    - Community service
    - Earth Day activity
    - School or club project



# MCM 1 – PUBLIC EDUCATION



- Public Education and Outreach – Examples/Tasks
  - Add storm water info in utility bills or newsletter
  - Place storm water information on city's website
    - ➔ SWMP
    - ➔ Hotline
    - Link to ordinance

**SOUTH WEBER CITY** DEPARTMENTS ▾ GOVERNMENT ▾ CITIZENS ▾ I WANT TO... ▾ ABOUT US ▾ **PAY YOUR BILL**

## WATER, SEWER & STORM DRAIN

CULINARY WATER	SECONDARY WATER	SEWER	STORM WATER & DRAIN
----------------	-----------------	-------	---------------------

South Weber City ordinance prohibits dumping or storing dirt, mulch, gravel, etc. on city streets. New, more stringent EPA rules closely regulate what goes into storm drains and South Weber City could receive fines for allowing dirt or debris to be placed on city streets. Citations could be issued to residents/contractors/developers who put dirt, mulch, gravel, etc. on city streets.

Many times people pollute water and don't know they are doing it. Now you know, here are a few things you can do:

- Clean up after your pet. Bring bags along when you walk your dog and encourage others to do the same.
- Don't leave grass clippings and/or leaves in the street when you do the yard work. Use them for fertilizer, compost them, or bag them.
- Don't litter.
- Don't put gas or motor oil in the gutter.
- Don't put household cleaners and/or paint in the gutter.
- Don't wash pesticides or solvents down the gutter.
- Don't wash radiator fluid down the gutter.
- Never dump anything down the storm drain. It is meant only for rainwater.
- Use water wisely and encourage others to do the same.
- Wash the family car on the lawn, not on the road or driveway.

[South Weber City Storm Water Management Plan](#)

Davis County Environmental Health Services Division: 801.525.5100

See the city's consolidated fee schedule to review rates for water, sewer, garbage and storm drain.

# STORM WATER

is not just rain!

Easy ways you can help prevent water pollution

http:

# MCM 1 – PUBLIC EDUCATION



- Public Education and Outreach – Other Tasks
  - Have a Registered Storm Water Inspector (RSI) on staff
  - **Develop and maintain** Standard Operating Procedures (SOPs)
  - **Training** for employees annually
  - **Document** outreach materials and efforts

# MCM 2 – PUBLIC INVOLVEMENT



## ■ Public Involvement and Participation - General

- **Implement** a program that complies with applicable State and Local public notice requirements
- **Conduct** opportunities for public involvement and participation, a minimum of two (2) times annually
  - advisory panels
  - public hearings
  - watershed committees
  - stewardship programs
  - environmental activities
  - volunteer opportunities
  - other similar activities
- **Involve** potentially affected stakeholder groups
  - commercial and industrial businesses
  - trade associations
  - environmental groups
  - homeowners' associations
  - education organizations

# MCM 2 – PUBLIC INVOLVEMENT



- **Public Involvement and Participation**
  - Similar to Public Education MCM, but more **aimed at the process**
  - Post SWMP on website and/or at city hall (available for review)
  - **Keep documentation**



# MCM 3 – ILLICIT DISCHARGE



- Illicit Discharge Detection and Elimination - General
  - **Revise, implement and enforce** an Illicit Discharge and Elimination (IDDE) program to systematically **find and eliminate** sources of non-stormwater discharges from the MS4
  - **Implement** defined procedures to prevent illicit connections and discharges



# MCM 3 – ILLICIT DISCHARGE



## ■ Illicit Discharge

- Official Definition: “... any discharge to a municipal separate storm sewer that is not composed entirely of storm water except discharges pursuant to a UPDES Permit (other than the UPDES Permit for discharges from the municipal separate storm sewer) and discharges resulting from emergency firefighting activities.”
- Simply Put: any discharge into the storm drain system or Waters of the State that isn't purely storm water





# MCM 3 – ILLICIT DISCHARGE



## ■ Non-storm water discharges:

- Water line flushing
- Landscape irrigation
- Diverted stream flows
- Rising ground waters
- Uncontaminated ground water infiltration
- Uncontaminated pumped ground water
- Discharges from potable water sources
- Foundation drains
- Air conditioning condensate
- Irrigation water
- Springs
- Water from crawl space pumps
- Footing drains
- Lawn watering runoff
- Individual residential car washing
- Flows from riparian habitats and wetlands
- Dechlorinated swimming pool discharges
- Residual street wash water
- Dechlorinated water reservoir discharges
- Discharges or flows from **emergency** fire fighting activity

# MCM 3 – ILLICIT DISCHARGE



- **Illicit Discharge Detection and Elimination – Tasks**
  - **General Idea:**
    - Avoid illicit discharges
    - Locate problem areas
    - Find the source, remove/correct illicit connection or discharge
    - Document actions taken
  - **Inspect** outfalls
  - **Promote** collection of household hazardous waste
    - Spring Cleanup
    - Fall Cleanup
  - **Publicize** hotline for reporting illicit discharges
  - **Develop** SOPs for avoiding, cleaning, tracking spills, responding to public referrals of illicit discharges, etc.
  - **Conduct IDDE annual training**
  - **Document, document, document**

# MCM 3 – ILLICIT DISCHARGE



**Illicit discharge?  
Yeah, that's obvious...**

# MCM 3 – ILLICIT DISCHARGE



Leaking  
dumpster



Dumping  
liquids off of  
loading dock



Discharging  
contaminated  
water

Maybe not  
so obvious...



Grass  
clippings in  
the gutter



Grass  
clippings  
dumped in  
drainage

# MCM 3 – ILLICIT DISCHARGE



Leaking fuel tank



Chlorinated swimming pool water

OF2272 - CB1297  
TBCI Colchester, Vt.  
12/03/2018 12:18  
1.0X  
27%  
-5.3°  
Dist N/A  
-73.24867° W  
44.53603° N  
23.0ft



Illicit Connection

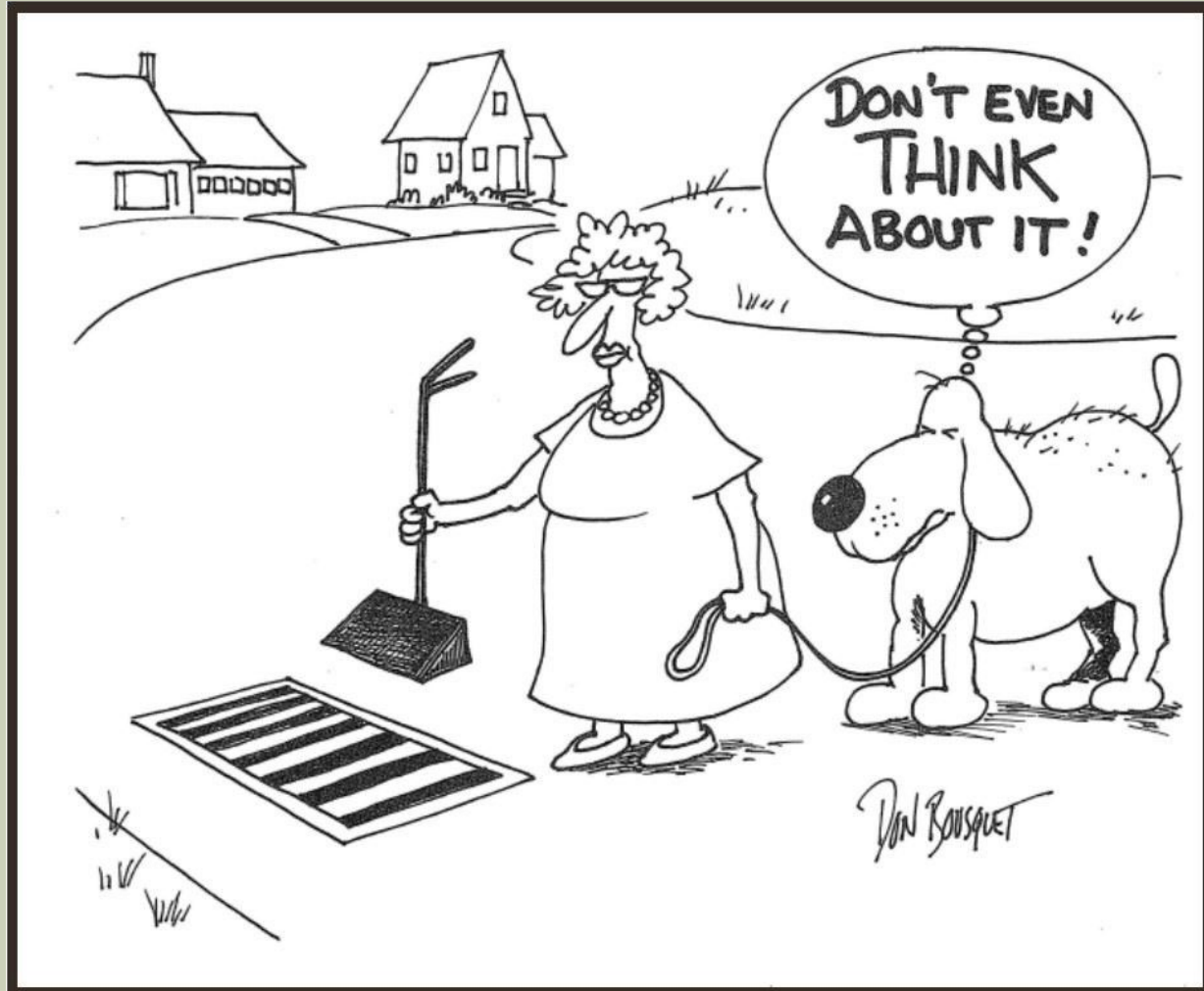
# MCM 3 – ILLICIT DISCHARGE



Concrete cutting water and concrete wash outs – watch for small projects like fences, sidewalks, and driveways



# MCM 3 – ILLICIT DISCHARGE



# MCM 3 – ILLICIT DISCHARGE



IF YOU SEE SOMETHING, SAY SOMETHING™



You are your City's  
eyes and ears.





# MCM 4 – CONSTRUCTION SITES



- Construction Site Storm Water Runoff Control - General
  - **Revise, implement, and enforce** a program to reduce pollutants in any storm water runoff to the MS4 from:
    - construction sites with a land disturbance of greater than or equal to one acre
    - sites less than one acre that are part of a larger common plan of development
  - Public and private projects, including projects proposed by the Permittee's own departments and agencies, shall comply with these requirements

# MCM 4 – CONSTRUCTION SITES



- Construction Site Storm Water Runoff Control - Tasks
  - **Revise/enforce ordinances** that require the use of erosion and sediment control practices
  - **Require** Storm Water Pollution Prevention Plan (SWPPP)
    - All disturbances greater than **1** acre
    - Disturbances less than **1** acre but part of a Common Plan of Development (i.e. individual building lots)
    - Disturbances in a sensitive area (e.g. floodplain, near wetland, steep slope, highly erosive soils)
  - **Inspections**
    - City responsible for inspecting construction sites monthly
    - City responsible for enforcing SWPPP, ordinances, violations



# MCM 4 – CONSTRUCTION SITES



## ■ More tasks...

- **Develop** SOPs for enforcement of ordinances
- **Document and track** all enforcement actions
- **Develop** checklist for SWPPP review
- **Conduct** pre-construction SWPPP meeting
- **Develop** procedures for receiving input by public
- **Identify** priority construction sites
- **Develop** SOPs for construction site inspection
- **Inspect** all phases of construction (pre-, during, and post-)
- **Perform** monthly inspections of all construction sites
- **Perform** bi-weekly inspections of high-priority sites
- **Perform** necessary follow-up actions



# MCM 4 – CONSTRUCTION SITES



- Have hotline for reporting issues posted at the construction site



**SWPPP**  
A Storm Water Pollution Protection Permit covers this construction site. If any Non-Storm Water discharge or severe vehicle tracking occurs please call 801-804-4577.



*Rainfall on construction sites can cause harmful polluted runoff and sediment to drain into local streams.*

# MCM 4 – CONSTRUCTION SITES



- **Provide annual training**
  - Registered Storm Water Inspectors, building inspectors
  - Anyone dealing with construction, building permits
- **Document reviews, inspections, enforcement**

# MCM 5 – LONG-TERM SW MGMT



- Long-Term Storm Water Management in New Development and Redevelopment - General
  - **Revise, implement, and enforce** a program to **address post-construction storm water runoff** to the MS4 from private and public new development and redevelopment construction sites.
  - These **water quality considerations** do not replace or substitute for water quantity or flood management requirements for new development or redevelopment sites.
  - The water quality controls may be **incorporated into the design** of structures intended for flow control; or water quality control may be achieved with separate control measures.
  - The program must **apply to private and public** development sites.

# MCM 5 – LONG-TERM SW MGMT



- **Low Impact Development (LID)**
  - **Official Definition:** “... an approach to land development (or re-development) that works with nature to more closely mimic pre-development hydrologic functions.”
  - **Simply Put:** structural and non-structural ways to minimize, slow, and/or clean storm water flows
  - **Examples:** minimizing impervious areas, preserving natural features, infiltration basins, rain barrels, permeable pavements

# MCM 5 – LONG-TERM SW MGMT



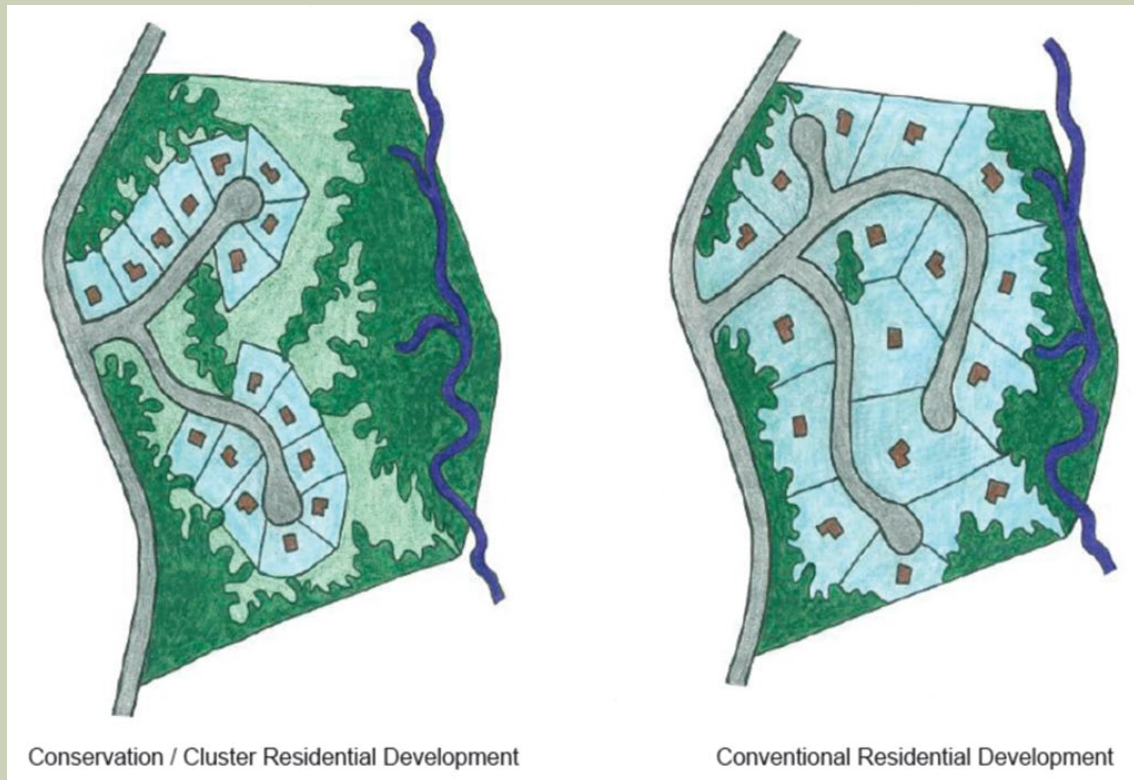
- Long-Term Storm Water Management for New Development and Redevelopment - Tasks
  - Program must have requirements or standards to ensure that any storm water controls or management practices for new development and redevelopment will **prevent or minimize impacts to water quality**.
  - Non-Structural BMPs (i.e. procedural)
    - Planning (ordinance, SWMP, City Standards)
    - Site-based design
  - **Develop and define** a specific hydrologic method or methods for calculating runoff volumes and flow rates
  - **Require retention** of 80<sup>th</sup> percentile storm event (~0.5") onsite
  - **Require** a process which requires the evaluation of a Low Impact Development (LID) approach
  - Permittees must allow for use of **a minimum of five (5) LID practices**
  - **Check** feasibility



# MCM 5 – LONG-TERM SW MGMT



- Non-structural example – land planning
  - Allow cluster subdivisions - leave undisturbed or natural land



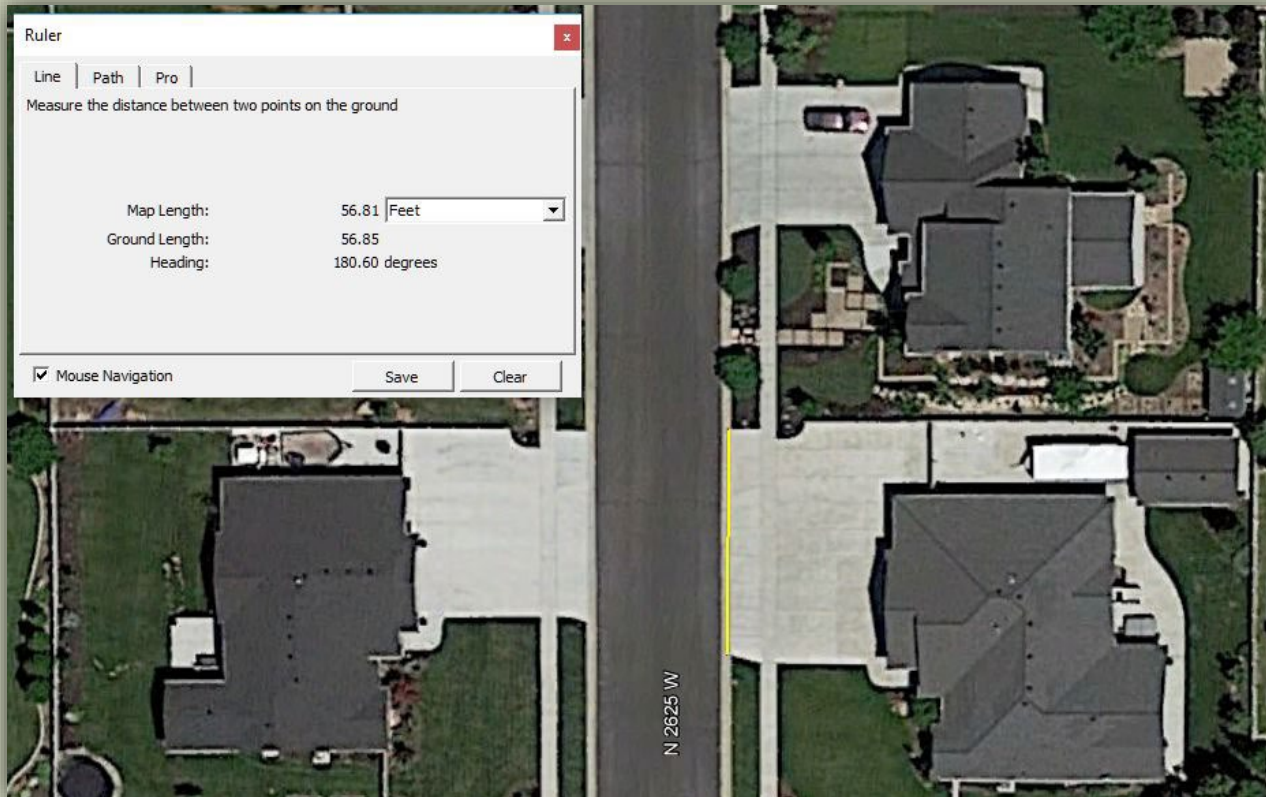
Conservation / Cluster Residential Development

Conventional Residential Development

# MCM 5 – LONG-TERM SW MGMT



- Non-structural example - minimize impervious surfaces
  - Minimize driveway widths (curb cuts at street) **by ordinance**
  - Encourage gravel and/or permeable pavers (site-based design)



# MCM 5 – LONG-TERM SW MGMT



- City selected 5 LID practices (structural)

**Bioretention Cell**  
**Bioswale**  
**Vegetated Strip**

**Infiltration Basin**  
**Infiltration Trench**



# MCM 5 – LONG-TERM SW MGMT



## ■ Selected Structural Practices

- Bioretention cells
- Bioswales
- Vegetated strips
- Infiltration Basins
  - can be incorporated into detention pond, when designed properly
- Infiltration Trench



**Water flows  
through vegetated strip  
to bioswale**

# MCM 5 – LONG-TERM SW MGMT



Bioretention Cell  
Grant Avenue at  
23<sup>rd</sup> St. in Ogden

**Curb cuts to  
allow inflow**

# MCM 5 – LONG-TERM SW MGMT

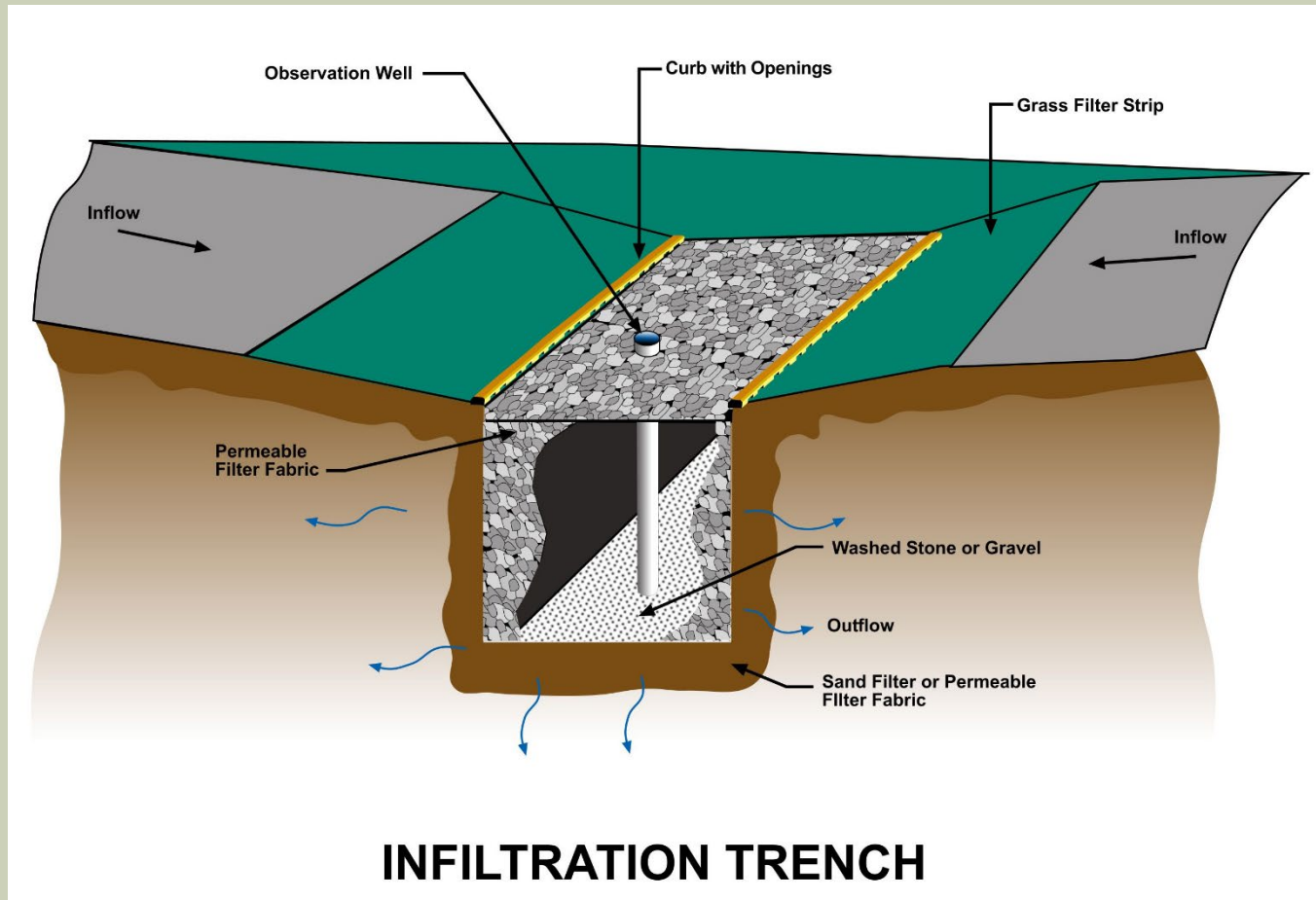


**Avoid pollution  
with pre-treatment**

**Infiltration/  
Detention  
Basins**



# MCM 5 – LONG-TERM SW MGMT

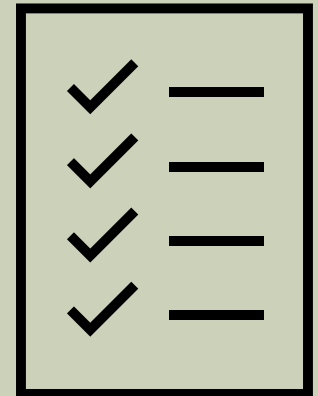


# MCM 5 – LONG-TERM SW MGMT



## ■ Other Tasks

- **Develop and adopt** ordinances that require long-term post-construction storm water controls including regulatory and enforcement provisions
- **Maintain** documentation of how the requirements will protect water quality
- **Adopt and implement** SOPs for site inspection and enforcement
- **Require** long-term storm water management agreements for private LID BMPs; **inspect** during installation, at completion, and every 5 years





# MCM 5 – LONG-TERM SW MGMT



- And more tasks...
  - Plan Review
    - **Adopt and implement** procedures for site plan review
    - **Review** plans to ensure they include long-term storm water management measures
  - Inventory
    - **Create and maintain** an inventory of long-term BMPs (public and private)
      - Retention/detention basins, snouts, bioswales, etc.
    - Keep database up-to-date
  - Training
    - Provide training – suitability, installation, maintenance
    - Maintain documentation

**So much to do,  
so little time!**

# MCM 6 – GOOD HOUSEKEEPING



- Pollution Prevention / Good Housekeeping – General
  - Implement a program for Permittee-owned or operated facilities, operations and structural storm water controls that includes SOPs, pollution prevention BMPs, storm water pollution prevention plans or similar type of documents, and a training component that have the **ultimate goal of preventing or reducing the runoff of pollutants to the MS4 and waters of the state.**
    - Public Works Yard
    - City Hall
    - City parks
    - City-owned detention/retention basins
    - Family Activity Center
    - South Weber Fire Station

# MCM 6 – GOOD HOUSEKEEPING



- **Pollution Prevention / Good Housekeeping – General**
  - All components of the program shall be included in the SWMP document and must identify the department responsible for performing each activity described in this section.
  - Develop and maintain an inventory of all such Permittee-owned or operated facilities.

# MCM 6 – GOOD HOUSEKEEPING



- **Pollution Prevention / Good Housekeeping - Tasks**
  - **Develop** SWPPP for each “high-priority” permittee-owned or operated facility (PW yard, etc.)
  - **Perform** weekly visual inspections
  - **Perform** quarterly comprehensive inspection of “high-priority” facilities
  - **Perform** quarterly observation of storm water discharge from “high-priority” facilities
  - **Develop/update** SOPs for other city-owned facilities (parks, roads, buildings, etc.)
  - **Obtain** private maintenance contracts (privately owned facilities)
  - Follow permitting process for public construction projects (SWPPP, NOI, NOT)
  - Provide training
  - **Document, document, document**

# SUMMARY

SWMP is a comprehensive plan that covers all facets of the City's storm water program

Requires involvement from City Council to Public Works to the public

Implementation requires time and manpower, both initial and on-going

# SUMMARY

Questions?

Discussion

Next Steps

# DEFINITIONS OF “DENSITY” USED BY OTHER CITY’S IN UTAH

DENSITY, GROSS AND NET: The term “gross density” shall be used to describe an estimate of the number of dwelling units per acre within an area in which public streets and nonresidential uses may be included in the total acreage. “Net density” shall describe the umber of dwelling units per acre of land that are devoted exclusively to residential use.

-----

DENSITY, NET (NET DWELLING ACRE): Net residential land that is devoted to residential uses and accessory uses on the same lots, such as open spaces, drives and service areas, but excluding land for public streets, public parking and nonresidential buildings.

-----

DENSITY: The number of dwellings per acre of land. Public and private streets, existing or proposed, and other publicly dedicated areas, existing or proposed, are not included in the total acreage.

-----

DENSITY, MAXIMUM: The total number of lots or dwelling units allowed by the application of a standard subdivision design, using the minimum lot size, width, and setback dimensions re quired by each unique zone.

-----

DENSITY: A measure of the number of dwelling units per acre of area. It shall be expressed dwelling units per acre (DU/acre). Unbuildable land (as defined by the Planning Commission) is land with a slope greater than thirty percent (30%), subject to inundation or other geological hazards.

DENSITY, GROSS: A measure of the number of dwelling units per acre of developable, including any area designated as a public or private street or access way, adjacent park strip(s), and sidewalk(s).

DENSITY, NET: A measure of the number of dwelling units per acre of developable land, which shall not include any area designated as a public or private street or access way, adjacent park strip(s), and sidewalk(s).







**FUN FACT:**  
The Major is the world's largest free flying American flag.  
It measures 150 ft x 78 ft.  
A crane carries the line from one side to the other to hang this glorious flag.  
The flag will fly this year from Oct. 31 - Nov. 12 (weather permitting).











