



**SOUTH WEBER COMMUNITY  
REDEVELOPMENT AGENCY (RDA)  
BOARD MEETING**

Watch live, or at your convenience.

<https://www.youtube.com/c/southwebercityut>

**PUBLIC NOTICE** is hereby given that the South Weber Community Redevelopment Agency (RDA) Board will meet in a regular public meeting during a City Council meeting which begins at 6:00 p.m. on Tuesday, May 26, 2026, in the Council Chambers at 1600 E. South Weber Dr.

**ITEMS**

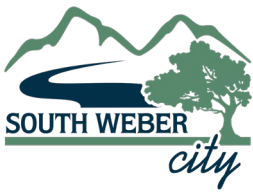
- 1. Public Hearing for RDA Fiscal Year 2027 Tentative Budget**
2. Adjourn and Convene Local Building Authority Board Meeting

*In compliance with the Americans with Disabilities Act, individuals needing special accommodations during this meeting should notify the City Recorder, 1600 East South Weber Drive, South Weber, Utah 84405 (801-479-3177) at least two days prior to the meeting.*

The undersigned City Recorder for the municipality of South Weber City hereby certifies that a copy of the foregoing notice was mailed/emailed/posted to: City Office building; Board Members and others on the agenda; City Website [southwebercity.com](http://southwebercity.com); and Utah Public Notice website [www.utah.gov/pmn/index.html](http://www.utah.gov/pmn/index.html).

**DATE: 05-20-2026**

**CITY RECORDER:** Lisa Smith



# REDEVELOPMENT AGENCY (RDA) BOARD MEETING STAFF REPORT

## MEETING DATE

May 26, 2026

## PREPARED BY

Lisa Smith

City Recorder

## ITEM TYPE

Administrative

## ATTACHMENTS

RDA Tentative Budget

## PRIOR DISCUSSION DATES

[May 12, 2026](#)

## AGENDA ITEM

**Public Hearing for RDA Fiscal Year 2027 Tentative Budget**

## PURPOSE

Allow South Weber Residents the chance to comment on the FY 2027 Budget

## BACKGROUND

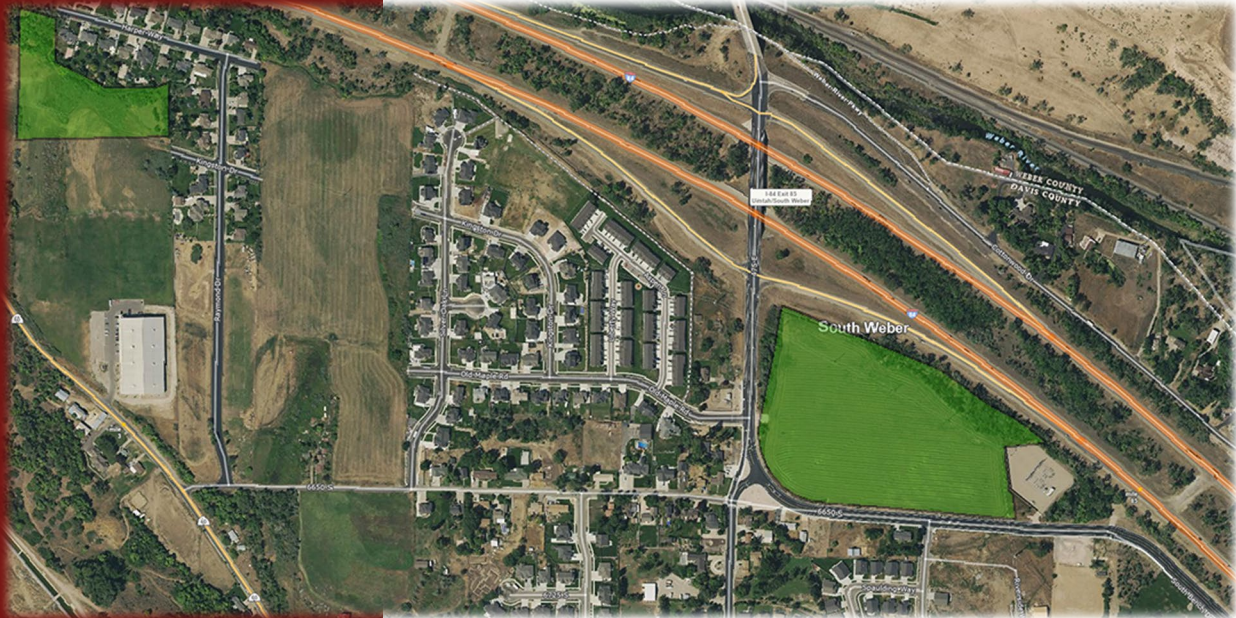
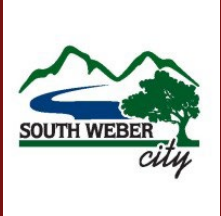
On May 12, 2026 the RDA board approved the tentative budget and set the hearing to receive public input.

Fiscal Year 2027

# Old Fort Community

# Reinvestment Area

Project Area Budget



ZIONS PUBLIC FINANCE, INC.

**South Weber Community Development and Renewal Agency**  
**Old Fort Community Reinvestment Area**  
**Projected Multi-Year Budget**

<b>Valuation Analysis &amp; Base Year Tax Revenue</b>											
Project Years	10	1	2	3	4	5	6	7	8	9	10
RDA Fiscal Year		2025	2026	2027	2028	2029	2030	2031	2032	2033	2034
Tax Increment Year		2024	2025	2026	2027	2028	2029	2030	2031	2032	2033
Total Base Year Value		\$1,677,304	\$1,677,304	\$1,677,304	\$1,677,304	\$1,677,304	\$1,677,304	\$1,677,304	\$1,677,304	\$1,677,304	\$1,677,304
Total Assessed Value		\$18,890,405	\$18,812,823	\$18,740,470	\$18,700,455	\$18,682,259	\$18,677,304	\$18,677,304	\$18,677,304	\$18,677,304	\$18,677,304
<b>Total Incremental Value</b>		<b>\$17,213,101</b>	<b>\$17,135,519</b>	<b>\$17,063,166</b>	<b>\$17,023,151</b>	<b>\$17,004,955</b>	<b>\$17,000,000</b>	<b>\$17,000,000</b>	<b>\$17,000,000</b>	<b>\$17,000,000</b>	<b>\$17,000,000</b>

Base Year Tax Revenues to Taxing Entities	2023 Tax Rate	Total	NPV	1	2	3	4	5	6	7	8	9	10
Davis County	0.001152	\$19,323	\$14,920	\$1,932	\$1,932	\$1,932	\$1,932	\$1,932	\$1,932	\$1,932	\$1,932	\$1,932	\$1,932
Multicounty Assessing & Collecting Levy	0.000015	\$252	\$194	\$25	\$25	\$25	\$25	\$25	\$25	\$25	\$25	\$25	\$25
County Assessing & Collecting Levy	0.000131	\$2,197	\$1,697	\$220	\$220	\$220	\$220	\$220	\$220	\$220	\$220	\$220	\$220
Davis County School District	0.006228	\$104,462	\$80,663	\$10,446	\$10,446	\$10,446	\$10,446	\$10,446	\$10,446	\$10,446	\$10,446	\$10,446	\$10,446
South Weber City	0.001330	\$22,308	\$17,226	\$2,231	\$2,231	\$2,231	\$2,231	\$2,231	\$2,231	\$2,231	\$2,231	\$2,231	\$2,231
Weber Basin Water Conservancy District	0.000200	\$3,355	\$2,590	\$335	\$335	\$335	\$335	\$335	\$335	\$335	\$335	\$335	\$335
Davis County Mosquito Abatement District	0.000098	\$1,644	\$1,269	\$164	\$164	\$164	\$164	\$164	\$164	\$164	\$164	\$164	\$164
Central Weber Sewer Improvement District	0.000523	\$8,772	\$6,774	\$877	\$877	\$877	\$877	\$877	\$877	\$877	\$877	\$877	\$877
County Library	0.000234	\$3,925	\$3,031	\$392	\$392	\$392	\$392	\$392	\$392	\$392	\$392	\$392	\$392
<b>Total</b>	<b>0.009911</b>	<b>\$166,238</b>	<b>\$128,364</b>	<b>\$16,624</b>	<b>\$16,624</b>	<b>\$16,624</b>	<b>\$16,624</b>	<b>\$16,624</b>	<b>\$16,624</b>	<b>\$16,624</b>	<b>\$16,624</b>	<b>\$16,624</b>	<b>\$16,624</b>

<b>Participation Rates</b>													
Davis County	50%	50%	50%	50%	50%	50%	50%	50%	50%	50%	50%	50%	50%
Multicounty Assessing & Collecting Levy	50%	50%	50%	50%	50%	50%	50%	50%	50%	50%	50%	50%	50%
County Assessing & Collecting Levy	50%	50%	50%	50%	50%	50%	50%	50%	50%	50%	50%	50%	50%
Davis County School District	50%	50%	50%	50%	50%	50%	50%	50%	50%	50%	50%	50%	50%
South Weber City	100%	100%	100%	100%	100%	100%	100%	100%	100%	100%	100%	100%	100%
Weber Basin Water Conservancy District	50%	50%	50%	50%	50%	50%	50%	50%	50%	50%	50%	50%	50%
Davis County Mosquito Abatement District	50%	50%	50%	50%	50%	50%	50%	50%	50%	50%	50%	50%	50%
Central Weber Sewer Improvement District	50%	50%	50%	50%	50%	50%	50%	50%	50%	50%	50%	50%	50%
County Library	50%	50%	50%	50%	50%	50%	50%	50%	50%	50%	50%	50%	50%

<b>Tax Increment Calculations</b>													
RDA Fiscal Year		2025	2026	2027	2028	2029	2030	2031	2032	2033	2034		
Tax Increment Year		2024	2025	2026	2027	2028	2029	2030	2031	2032	2033		
Total Incremental Revenues	2023 Tax Rate	Total	NPV	1	2	3	4	5	6	7	8	9	10
Davis County	0.001152	\$196,347	\$151,687	\$19,829	\$19,740	\$19,657	\$19,611	\$19,590	\$19,584	\$19,584	\$19,584	\$19,584	\$19,584
Multicounty Assessing & Collecting Levy	0.000015	\$2,557	\$1,975	\$258	\$257	\$256	\$255	\$255	\$255	\$255	\$255	\$255	\$255
County Assessing & Collecting Levy	0.000131	\$22,328	\$17,249	\$2,255	\$2,245	\$2,235	\$2,230	\$2,228	\$2,227	\$2,227	\$2,227	\$2,227	\$2,227
Davis County School District	0.006228	\$1,061,500	\$820,059	\$107,203	\$106,720	\$106,269	\$106,020	\$105,907	\$105,876	\$105,876	\$105,876	\$105,876	\$105,876
South Weber City	0.001330	\$226,685	\$175,125	\$22,893	\$22,790	\$22,694	\$22,641	\$22,617	\$22,610	\$22,610	\$22,610	\$22,610	\$22,610
Weber Basin Water Conservancy District	0.000200	\$34,088	\$26,335	\$3,443	\$3,427	\$3,413	\$3,405	\$3,401	\$3,400	\$3,400	\$3,400	\$3,400	\$3,400
Davis County Mosquito Abatement District	0.000098	\$16,703	\$12,904	\$1,687	\$1,679	\$1,672	\$1,668	\$1,666	\$1,666	\$1,666	\$1,666	\$1,666	\$1,666
Central Weber Sewer Improvement District	0.000523	\$89,140	\$68,865	\$9,002	\$8,962	\$8,924	\$8,903	\$8,894	\$8,891	\$8,891	\$8,891	\$8,891	\$8,891
County Library	0.000234	\$39,883	\$30,811	\$4,028	\$4,010	\$3,993	\$3,983	\$3,979	\$3,978	\$3,978	\$3,978	\$3,978	\$3,978
<b>Total</b>	<b>0.009911</b>	<b>\$1,689,230</b>	<b>\$1,305,010</b>	<b>\$170,599</b>	<b>\$169,830</b>	<b>\$169,113</b>	<b>\$168,716</b>	<b>\$168,536</b>	<b>\$168,487</b>	<b>\$168,487</b>	<b>\$168,487</b>	<b>\$168,487</b>	<b>\$168,487</b>

**Tax Increment Calculations**

RDA Fiscal Year				2025	2026	2027	2028	2029	2030	2031	2032	2033	2034
Tax Increment Year				2024	2025	2026	2027	2028	2029	2030	2031	2032	2033
Incremental Tax Revenues to Taxing Entities				2023 Tax Rate	Total	NPV							
Davis County	0.001152	\$98,173	\$75,844	\$9,915	\$9,870	\$9,828	\$9,805	\$9,795	\$9,792	\$9,792	\$9,792	\$9,792	\$9,792
Multicounty Assessing & Collecting Levy	0.000015	\$1,278	\$988	\$129	\$129	\$128	\$128	\$128	\$128	\$128	\$128	\$128	\$128
County Assessing & Collecting Levy	0.000131	\$11,164	\$8,625	\$1,127	\$1,122	\$1,118	\$1,115	\$1,114	\$1,114	\$1,114	\$1,114	\$1,114	\$1,114
Davis County School District	0.006228	\$530,750	\$410,029	\$53,602	\$53,360	\$53,135	\$53,010	\$52,953	\$52,938	\$52,938	\$52,938	\$52,938	\$52,938
South Weber City	0.001330	\$0	\$0	\$0	\$0	\$0	\$0	\$0	\$0	\$0	\$0	\$0	\$0
Weber Basin Water Conservancy District	0.000200	\$17,044	\$13,167	\$1,721	\$1,714	\$1,706	\$1,702	\$1,700	\$1,700	\$1,700	\$1,700	\$1,700	\$1,700
Davis County Mosquito Abatement District	0.000098	\$8,352	\$6,452	\$843	\$840	\$836	\$834	\$833	\$833	\$833	\$833	\$833	\$833
Central Weber Sewer Improvement District	0.000523	\$44,570	\$34,432	\$4,501	\$4,481	\$4,462	\$4,452	\$4,447	\$4,446	\$4,446	\$4,446	\$4,446	\$4,446
County Library	0.000234	\$19,941	\$15,406	\$2,014	\$2,005	\$1,996	\$1,992	\$1,990	\$1,989	\$1,989	\$1,989	\$1,989	\$1,989
<b>Total</b>	<b>0.009911</b>	<b>\$731,272</b>	<b>\$564,942</b>	<b>\$73,853</b>	<b>\$73,520</b>	<b>\$73,210</b>	<b>\$73,038</b>	<b>\$72,960</b>	<b>\$72,939</b>	<b>\$72,939</b>	<b>\$72,939</b>	<b>\$72,939</b>	<b>\$72,939</b>
Incremental Tax Revenues to Agency				2023 Tax Rate	Total	NPV							
Davis County	0.001152	\$98,173	\$75,844	\$9,915	\$9,870	\$9,828	\$9,805	\$9,795	\$9,792	\$9,792	\$9,792	\$9,792	\$9,792
Multicounty Assessing & Collecting Levy	0.000015	\$1,278	\$988	\$129	\$129	\$128	\$128	\$128	\$128	\$128	\$128	\$128	\$128
County Assessing & Collecting Levy	0.000131	\$11,164	\$8,625	\$1,127	\$1,122	\$1,118	\$1,115	\$1,114	\$1,114	\$1,114	\$1,114	\$1,114	\$1,114
Davis County School District	0.006228	\$530,750	\$410,029	\$53,602	\$53,360	\$53,135	\$53,010	\$52,953	\$52,938	\$52,938	\$52,938	\$52,938	\$52,938
South Weber City	0.001330	\$226,685	\$175,125	\$22,893	\$22,790	\$22,694	\$22,641	\$22,617	\$22,610	\$22,610	\$22,610	\$22,610	\$22,610
Weber Basin Water Conservancy District	0.000200	\$17,044	\$13,167	\$1,721	\$1,714	\$1,706	\$1,702	\$1,700	\$1,700	\$1,700	\$1,700	\$1,700	\$1,700
Davis County Mosquito Abatement District	0.000098	\$8,352	\$6,452	\$843	\$840	\$836	\$834	\$833	\$833	\$833	\$833	\$833	\$833
Central Weber Sewer Improvement District	0.000523	\$44,570	\$34,432	\$4,501	\$4,481	\$4,462	\$4,452	\$4,447	\$4,446	\$4,446	\$4,446	\$4,446	\$4,446
County Library	0.000234	\$19,941	\$15,406	\$2,014	\$2,005	\$1,996	\$1,992	\$1,990	\$1,989	\$1,989	\$1,989	\$1,989	\$1,989
<b>Total</b>	<b>0.009911</b>	<b>\$957,957</b>	<b>\$740,067</b>	<b>\$96,746</b>	<b>\$96,310</b>	<b>\$95,904</b>	<b>\$95,679</b>	<b>\$95,576</b>	<b>\$95,549</b>	<b>\$95,549</b>	<b>\$95,549</b>	<b>\$95,549</b>	<b>\$95,549</b>

<b>Agency Budget</b>												
<b>RDA Fiscal Year</b>			<b>2025</b>	<b>2026</b>	<b>2027</b>	<b>2028</b>	<b>2029</b>	<b>2030</b>	<b>2031</b>	<b>2032</b>	<b>2033</b>	<b>2034</b>
<b>Tax Increment Year</b>			<b>2024</b>	<b>2025</b>	<b>2026</b>	<b>2027</b>	<b>2028</b>	<b>2029</b>	<b>2030</b>	<b>2031</b>	<b>2032</b>	<b>2033</b>
<b>Revenues</b>												
<b>Incremental Tax Revenues to Agency</b>												
	<b>Total</b>	<b>NPV</b>										
Davis County	\$98,173	\$75,844	\$9,915	\$9,870	\$9,828	\$9,805	\$9,795	\$9,792	\$9,792	\$9,792	\$9,792	\$9,792
Multicounty Assessing & Collecting Levy	\$1,278	\$988	\$129	\$129	\$128	\$128	\$128	\$128	\$128	\$128	\$128	\$128
County Assessing & Collecting Levy	\$11,164	\$8,625	\$1,127	\$1,122	\$1,118	\$1,115	\$1,114	\$1,114	\$1,114	\$1,114	\$1,114	\$1,114
Davis County School District	\$530,750	\$410,029	\$53,602	\$53,360	\$53,135	\$53,010	\$52,953	\$52,938	\$52,938	\$52,938	\$52,938	\$52,938
South Weber City	\$226,685	\$175,125	\$22,893	\$22,790	\$22,694	\$22,641	\$22,617	\$22,610	\$22,610	\$22,610	\$22,610	\$22,610
Weber Basin Water Conservancy District	\$17,044	\$13,167	\$1,721	\$1,714	\$1,706	\$1,702	\$1,700	\$1,700	\$1,700	\$1,700	\$1,700	\$1,700
Davis County Mosquito Abatement District	\$8,352	\$6,452	\$843	\$840	\$836	\$834	\$833	\$833	\$833	\$833	\$833	\$833
Central Weber Sewer Improvement District	\$44,570	\$34,432	\$4,501	\$4,481	\$4,462	\$4,452	\$4,447	\$4,446	\$4,446	\$4,446	\$4,446	\$4,446
County Library	\$19,941	\$15,406	\$2,014	\$2,005	\$1,996	\$1,992	\$1,990	\$1,989	\$1,989	\$1,989	\$1,989	\$1,989
<b>Total</b>	<b>\$957,957</b>	<b>\$740,067</b>	<b>\$96,746</b>	<b>\$96,310</b>	<b>\$95,904</b>	<b>\$95,679</b>	<b>\$95,576</b>	<b>\$95,549</b>	<b>\$95,549</b>	<b>\$95,549</b>	<b>\$95,549</b>	<b>\$95,549</b>
<b>Expenditures</b>												
	<b>Total</b>	<b>NPV</b>										
<i>Redevelopment Agency Administrative Percent</i>			2.5%	2.5%	2.5%	2.5%	2.5%	2.5%	2.5%	2.5%	2.5%	2.5%
Administrative Costs	(\$23,949)	(\$18,502)	(\$2,419)	(\$2,408)	(\$2,398)	(\$2,392)	(\$2,389)	(\$2,389)	(\$2,389)	(\$2,389)	(\$2,389)	(\$2,389)
<i>Davis County Administrative Percent (Library &amp; County)</i>			2.5%	2.5%	2.5%	2.5%	2.5%	2.5%	2.5%	2.5%	2.5%	2.5%
Administrative Costs	(\$2,655)	(\$2,281)	(\$298)	(\$297)	(\$296)	(\$295)	(\$295)	(\$295)	(\$295)	(\$295)	(\$295)	(\$295)
<i>Housing Percent</i>			10.0%	10.0%	10.0%	10.0%	10.0%	10.0%	10.0%	10.0%	10.0%	10.0%
Housing Costs	\$0	\$0	\$0	\$0	\$0	\$0	\$0	\$0	\$0	\$0	\$0	\$0
<i>Infrastructure Costs</i>												
Canal Reroute and Piping Main Site	(\$546,920)	(\$464,101)	(\$94,029)	(\$93,606)	(\$93,210)	(\$92,992)	(\$92,892)	(\$80,191)				
Inventory Lot Public Improvements	(\$225,647)	(\$155,871)	\$0	\$0	\$0	\$0	\$0	(\$12,674)	(\$92,865)	(\$92,865)	(\$27,243)	
<b>Remaining Increment for Project Area Development</b>	<b>\$158,487</b>	<b>\$99,312</b>	<b>\$0</b>	<b>\$0</b>	<b>\$0</b>	<b>\$0</b>	<b>\$0</b>	<b>\$0</b>	<b>\$0</b>	<b>\$0</b>	<b>\$65,622</b>	<b>\$92,865</b>

<b>Cap on Tax Increment to Agency</b>	
Davis County	\$98,173
Multicounty Assessing & Collecting Levy	\$1,278
County Assessing & Collecting Levy	\$11,164
Davis County School District	\$530,750
South Weber City	\$226,685
Weber Basin Water Conservancy District	\$17,044
Davis County Mosquito Abatement District	\$8,352
Central Weber Sewer Improvement District	\$44,570
County Library	\$19,941
<b>Total</b>	<b>\$957,957</b>