



## SOUTH WEBER COMMUNITY REDEVELOPMENT AGENCY (RDA) BOARD MEETING

---

Watch live, or at your convenience.  
<https://www.youtube.com/c/southwebercityut>

**PUBLIC NOTICE is hereby given that the South Weber Community Redevelopment Agency (RDA) Board will meet in a regular public meeting during a City Council meeting which begins at 6:00 p.m. on Tuesday, May 12, 2026 in the Council Chambers at 1600 E. South Weber Dr.**

### ITEMS

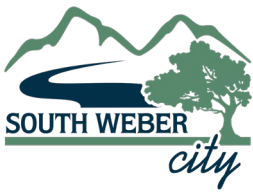
1. RDA Resolution 26-01: Adopt Fiscal Year 2027 Redevelopment Agency Tentative Budget and Set Public Hearing for May 26, 2026
2. Adjourn RDA Meeting and Convene Local Building Authority Meeting

*In compliance with the Americans with Disabilities Act, individuals needing special accommodations during this meeting should notify the City Recorder, 1600 East South Weber Drive, South Weber, Utah 84405 (801-479-3177) at least two days prior to the meeting.*

The undersigned City Recorder for the municipality of South Weber City hereby certifies that a copy of the foregoing notice was mailed/emailed/posted to: City Office building; Board Members and others on the agenda; City Website [southwebercity.com/](https://southwebercity.com/); and Utah Public Notice website [www.utah.gov/pmn/index.html](http://www.utah.gov/pmn/index.html).

**DATE: 05-05-2026**

**CITY RECORDER:** Lisa Smith



# CITY COUNCIL MEETING STAFF REPORT

## MEETING DATE

May 12, 2026

## PREPARED BY

Brett Baltazar

Finance Director

## ITEM TYPE

Legislative

## ATTACHMENTS

Exhibit 1- 2027 CRA  
Tentative Budget

## PRIOR DISCUSSION DATES

## AGENDA ITEM

FY 2027 CRA Tentative Budget Adoption and Set Public Hearing for May 26, 2026

## PURPOSE

Discuss CRA Tentative Budget and Set Public Hearing

## RECOMMENDATION

Staff Recommends adoption and Set Public Hearing

## BACKGROUND

Adoption of the CRA Tentative Budget for fiscal year beginning July 1, 2026 and ending June 30, 2027. Set a public hearing for public comment on the tentative budget set for adoption on May 26, 2026. Following the public hearing, the city council may continue discussions and adjust this budget until the Final Budget is adopted.

The Old Fort Community Reinvestment Area (CRA) was initiated in FY 2025 for the development of a recreational vehicle sales storage area within South Weber City. Over a ten-year span, the Taxing Increment Finance (TIF) amount is \$957,957.

## ANALYSIS

The FY 2027 impact is estimated to be \$96,000. The revenue is used primarily for infrastructure improvements that make development possible.

**RDA RESOLUTION 26-01**

**A RESOLUTION OF THE SOUTH WEBER CITY COMMUNITY DEVELOPMENT AND RENEWAL AGENCY (RDA) ADOPTING THE TENTATIVE BUDGET FOR FISCAL YEAR 2027**

**WHEREAS**, Utah Code Annotated 10-6-111, 10-6-112, and 10-6-118 require the governing body to prepare a tentative budget, provide that budget for public inspection, and approve that budget before the end of the fiscal period; and

**WHEREAS**, Finance Direct Brett Baltazar and City Manager David Larson have worked with the Board to create a fiscally responsible budget; and

**WHEREAS**, the Tentative Budget is a public document that will be modified and amended as needed prior to adoption of the Final Budget; and

**WHEREAS**, the RDA Board shall hold a public hearing for citizens input at its meeting on May 26, 2026; and

**WHEREAS**, the Board has carefully considered the proposed budget and with full conformity with state laws, now desires to adopt the same;

**NOW THEREFORE BE IT RESOLVED** by the Governing Board of the South Weber City Community Development and Renewal Agency as follows:

**Section 1. Adopt:** The Tentative Budget for Fiscal Year 2027 is hereby adopted as attached in **Exhibit 1** and a public hearing is set as referenced above.

**Section 2: Repealer Clause:** All ordinances or resolutions or parts thereof, which are in conflict herewith, are hereby repealed.

**PASSED AND ADOPTED** by the RDA Board of South Weber, Davis County, on the 12<sup>th</sup> day of May 2026.

Roll call vote is as follows:		
Board Member Halverson	FOR	AGAINST
Board Member Petty	FOR	AGAINST
Chair Westbrook	FOR	AGAINST
Board Member Dills	FOR	AGAINST
Board Member Davis	FOR	AGAINST
Board Member Winsor	FOR	AGAINST

---

**Rod Westbrook, Chair**

---

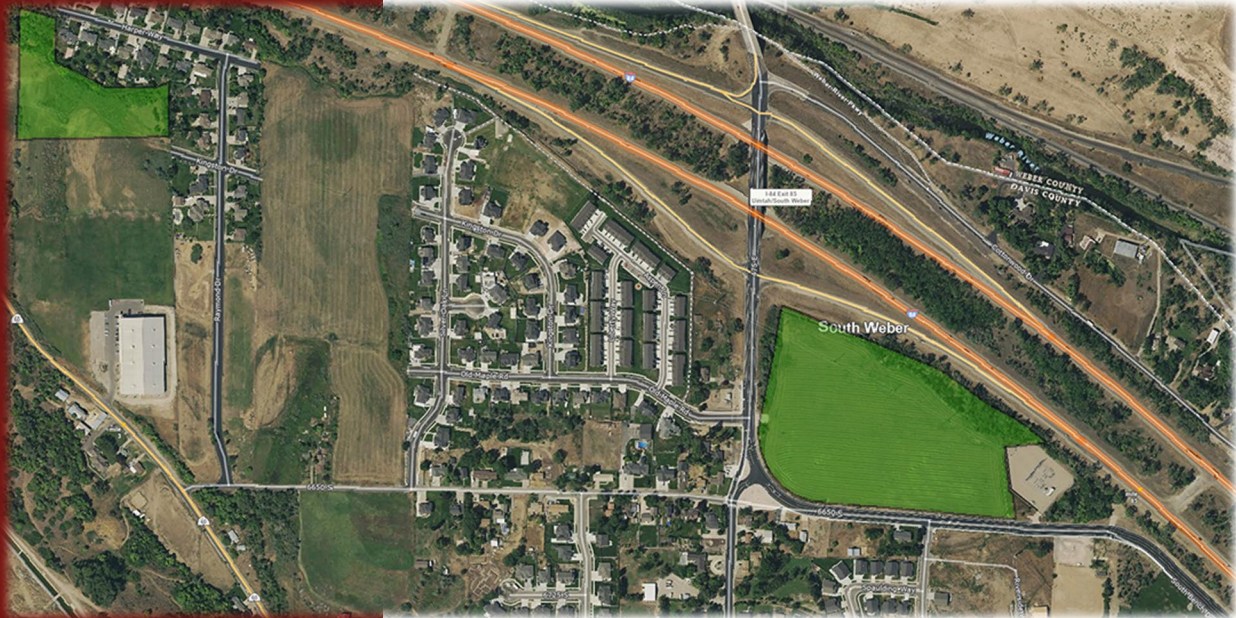
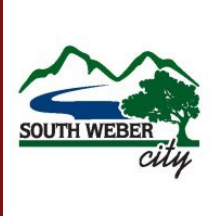
**Attest:** Lisa Smith, Secretary

Fiscal Year 2027

# Old Fort Community

# Reinvestment Area

Project Area Budget



**South Weber Community Development and Renewal Agency**  
**Old Fort Community Reinvestment Area**  
**Projected Multi-Year Budget**

<b>Valuation Analysis &amp; Base Year Tax Revenue</b>											
Project Years	10	1	2	3	4	5	6	7	8	9	10
RDA Fiscal Year		2025	2026	2027	2028	2029	2030	2031	2032	2033	2034
Tax Increment Year		2024	2025	2026	2027	2028	2029	2030	2031	2032	2033
Total Base Year Value		\$1,677,304	\$1,677,304	\$1,677,304	\$1,677,304	\$1,677,304	\$1,677,304	\$1,677,304	\$1,677,304	\$1,677,304	\$1,677,304
Total Assessed Value		\$18,890,405	\$18,812,823	\$18,740,470	\$18,700,455	\$18,682,259	\$18,677,304	\$18,677,304	\$18,677,304	\$18,677,304	\$18,677,304
<b>Total Incremental Value</b>		<b>\$17,213,101</b>	<b>\$17,135,519</b>	<b>\$17,063,166</b>	<b>\$17,023,151</b>	<b>\$17,004,955</b>	<b>\$17,000,000</b>	<b>\$17,000,000</b>	<b>\$17,000,000</b>	<b>\$17,000,000</b>	<b>\$17,000,000</b>

Base Year Tax Revenues to Taxing Entities	2023 Tax Rate	Total	NPV	1	2	3	4	5	6	7	8	9	10
Davis County	0.001152	\$19,323	\$14,920	\$1,932	\$1,932	\$1,932	\$1,932	\$1,932	\$1,932	\$1,932	\$1,932	\$1,932	\$1,932
Multicounty Assessing & Collecting Levy	0.000015	\$252	\$194	\$25	\$25	\$25	\$25	\$25	\$25	\$25	\$25	\$25	\$25
County Assessing & Collecting Levy	0.000131	\$2,197	\$1,697	\$220	\$220	\$220	\$220	\$220	\$220	\$220	\$220	\$220	\$220
Davis County School District	0.006228	\$104,462	\$80,663	\$10,446	\$10,446	\$10,446	\$10,446	\$10,446	\$10,446	\$10,446	\$10,446	\$10,446	\$10,446
South Weber City	0.001330	\$22,308	\$17,226	\$2,231	\$2,231	\$2,231	\$2,231	\$2,231	\$2,231	\$2,231	\$2,231	\$2,231	\$2,231
Weber Basin Water Conservancy District	0.000200	\$3,355	\$2,590	\$335	\$335	\$335	\$335	\$335	\$335	\$335	\$335	\$335	\$335
Davis County Mosquito Abatement District	0.000098	\$1,644	\$1,269	\$164	\$164	\$164	\$164	\$164	\$164	\$164	\$164	\$164	\$164
Central Weber Sewer Improvement District	0.000523	\$8,772	\$6,774	\$877	\$877	\$877	\$877	\$877	\$877	\$877	\$877	\$877	\$877
County Library	0.000234	\$3,925	\$3,031	\$392	\$392	\$392	\$392	\$392	\$392	\$392	\$392	\$392	\$392
<b>Total</b>	<b>0.009911</b>	<b>\$166,238</b>	<b>\$128,364</b>	<b>\$16,624</b>	<b>\$16,624</b>	<b>\$16,624</b>	<b>\$16,624</b>	<b>\$16,624</b>	<b>\$16,624</b>	<b>\$16,624</b>	<b>\$16,624</b>	<b>\$16,624</b>	<b>\$16,624</b>

<b>Participation Rates</b>													
Davis County	50%	50%	50%	50%	50%	50%	50%	50%	50%	50%	50%	50%	50%
Multicounty Assessing & Collecting Levy	50%	50%	50%	50%	50%	50%	50%	50%	50%	50%	50%	50%	50%
County Assessing & Collecting Levy	50%	50%	50%	50%	50%	50%	50%	50%	50%	50%	50%	50%	50%
Davis County School District	50%	50%	50%	50%	50%	50%	50%	50%	50%	50%	50%	50%	50%
South Weber City	100%	100%	100%	100%	100%	100%	100%	100%	100%	100%	100%	100%	100%
Weber Basin Water Conservancy District	50%	50%	50%	50%	50%	50%	50%	50%	50%	50%	50%	50%	50%
Davis County Mosquito Abatement District	50%	50%	50%	50%	50%	50%	50%	50%	50%	50%	50%	50%	50%
Central Weber Sewer Improvement District	50%	50%	50%	50%	50%	50%	50%	50%	50%	50%	50%	50%	50%
County Library	50%	50%	50%	50%	50%	50%	50%	50%	50%	50%	50%	50%	50%

<b>Tax Increment Calculations</b>													
RDA Fiscal Year		2025	2026	2027	2028	2029	2030	2031	2032	2033	2034		
Tax Increment Year		2024	2025	2026	2027	2028	2029	2030	2031	2032	2033		
Total Incremental Revenues	2023 Tax Rate	Total	NPV	1	2	3	4	5	6	7	8	9	10
Davis County	0.001152	\$196,347	\$151,687	\$19,829	\$19,740	\$19,657	\$19,611	\$19,590	\$19,584	\$19,584	\$19,584	\$19,584	\$19,584
Multicounty Assessing & Collecting Levy	0.000015	\$2,557	\$1,975	\$258	\$257	\$256	\$255	\$255	\$255	\$255	\$255	\$255	\$255
County Assessing & Collecting Levy	0.000131	\$22,328	\$17,249	\$2,255	\$2,245	\$2,235	\$2,230	\$2,228	\$2,227	\$2,227	\$2,227	\$2,227	\$2,227
Davis County School District	0.006228	\$1,061,500	\$820,059	\$107,203	\$106,720	\$106,269	\$106,020	\$105,907	\$105,876	\$105,876	\$105,876	\$105,876	\$105,876
South Weber City	0.001330	\$226,685	\$175,125	\$22,893	\$22,790	\$22,694	\$22,641	\$22,617	\$22,610	\$22,610	\$22,610	\$22,610	\$22,610
Weber Basin Water Conservancy District	0.000200	\$34,088	\$26,335	\$3,443	\$3,427	\$3,413	\$3,405	\$3,401	\$3,400	\$3,400	\$3,400	\$3,400	\$3,400
Davis County Mosquito Abatement District	0.000098	\$16,703	\$12,904	\$1,687	\$1,679	\$1,672	\$1,668	\$1,666	\$1,666	\$1,666	\$1,666	\$1,666	\$1,666
Central Weber Sewer Improvement District	0.000523	\$89,140	\$68,865	\$9,002	\$8,962	\$8,924	\$8,903	\$8,894	\$8,891	\$8,891	\$8,891	\$8,891	\$8,891
County Library	0.000234	\$39,883	\$30,811	\$4,028	\$4,010	\$3,993	\$3,983	\$3,979	\$3,978	\$3,978	\$3,978	\$3,978	\$3,978
<b>Total</b>	<b>0.009911</b>	<b>\$1,689,230</b>	<b>\$1,305,010</b>	<b>\$170,599</b>	<b>\$169,830</b>	<b>\$169,113</b>	<b>\$168,716</b>	<b>\$168,536</b>	<b>\$168,487</b>	<b>\$168,487</b>	<b>\$168,487</b>	<b>\$168,487</b>	<b>\$168,487</b>

**Tax Increment Calculations**

RDA Fiscal Year				2025	2026	2027	2028	2029	2030	2031	2032	2033	2034
Tax Increment Year				2024	2025	2026	2027	2028	2029	2030	2031	2032	2033
Incremental Tax Revenues to Taxing Entities				2023 Tax Rate	Total	NPV							
Davis County	0.001152	\$98,173	\$75,844	\$9,915	\$9,870	\$9,828	\$9,805	\$9,795	\$9,792	\$9,792	\$9,792	\$9,792	\$9,792
Multicounty Assessing & Collecting Levy	0.000015	\$1,278	\$988	\$129	\$129	\$128	\$128	\$128	\$128	\$128	\$128	\$128	\$128
County Assessing & Collecting Levy	0.000131	\$11,164	\$8,625	\$1,127	\$1,122	\$1,118	\$1,115	\$1,114	\$1,114	\$1,114	\$1,114	\$1,114	\$1,114
Davis County School District	0.006228	\$530,750	\$410,029	\$53,602	\$53,360	\$53,135	\$53,010	\$52,953	\$52,938	\$52,938	\$52,938	\$52,938	\$52,938
South Weber City	0.001330	\$0	\$0	\$0	\$0	\$0	\$0	\$0	\$0	\$0	\$0	\$0	\$0
Weber Basin Water Conservancy District	0.000200	\$17,044	\$13,167	\$1,721	\$1,714	\$1,706	\$1,702	\$1,700	\$1,700	\$1,700	\$1,700	\$1,700	\$1,700
Davis County Mosquito Abatement District	0.000098	\$8,352	\$6,452	\$843	\$840	\$836	\$834	\$833	\$833	\$833	\$833	\$833	\$833
Central Weber Sewer Improvement District	0.000523	\$44,570	\$34,432	\$4,501	\$4,481	\$4,462	\$4,452	\$4,447	\$4,446	\$4,446	\$4,446	\$4,446	\$4,446
County Library	0.000234	\$19,941	\$15,406	\$2,014	\$2,005	\$1,996	\$1,992	\$1,990	\$1,989	\$1,989	\$1,989	\$1,989	\$1,989
<b>Total</b>	<b>0.009911</b>	<b>\$731,272</b>	<b>\$564,942</b>	<b>\$73,853</b>	<b>\$73,520</b>	<b>\$73,210</b>	<b>\$73,038</b>	<b>\$72,960</b>	<b>\$72,939</b>	<b>\$72,939</b>	<b>\$72,939</b>	<b>\$72,939</b>	<b>\$72,939</b>
Incremental Tax Revenues to Agency				2023 Tax Rate	Total	NPV							
Davis County	0.001152	\$98,173	\$75,844	\$9,915	\$9,870	\$9,828	\$9,805	\$9,795	\$9,792	\$9,792	\$9,792	\$9,792	\$9,792
Multicounty Assessing & Collecting Levy	0.000015	\$1,278	\$988	\$129	\$129	\$128	\$128	\$128	\$128	\$128	\$128	\$128	\$128
County Assessing & Collecting Levy	0.000131	\$11,164	\$8,625	\$1,127	\$1,122	\$1,118	\$1,115	\$1,114	\$1,114	\$1,114	\$1,114	\$1,114	\$1,114
Davis County School District	0.006228	\$530,750	\$410,029	\$53,602	\$53,360	\$53,135	\$53,010	\$52,953	\$52,938	\$52,938	\$52,938	\$52,938	\$52,938
South Weber City	0.001330	\$226,685	\$175,125	\$22,893	\$22,790	\$22,694	\$22,641	\$22,617	\$22,610	\$22,610	\$22,610	\$22,610	\$22,610
Weber Basin Water Conservancy District	0.000200	\$17,044	\$13,167	\$1,721	\$1,714	\$1,706	\$1,702	\$1,700	\$1,700	\$1,700	\$1,700	\$1,700	\$1,700
Davis County Mosquito Abatement District	0.000098	\$8,352	\$6,452	\$843	\$840	\$836	\$834	\$833	\$833	\$833	\$833	\$833	\$833
Central Weber Sewer Improvement District	0.000523	\$44,570	\$34,432	\$4,501	\$4,481	\$4,462	\$4,452	\$4,447	\$4,446	\$4,446	\$4,446	\$4,446	\$4,446
County Library	0.000234	\$19,941	\$15,406	\$2,014	\$2,005	\$1,996	\$1,992	\$1,990	\$1,989	\$1,989	\$1,989	\$1,989	\$1,989
<b>Total</b>	<b>0.009911</b>	<b>\$957,957</b>	<b>\$740,067</b>	<b>\$96,746</b>	<b>\$96,310</b>	<b>\$95,904</b>	<b>\$95,679</b>	<b>\$95,576</b>	<b>\$95,549</b>	<b>\$95,549</b>	<b>\$95,549</b>	<b>\$95,549</b>	<b>\$95,549</b>

<b>Agency Budget</b>												
<b>RDA Fiscal Year</b>			<b>2025</b>	<b>2026</b>	<b>2027</b>	<b>2028</b>	<b>2029</b>	<b>2030</b>	<b>2031</b>	<b>2032</b>	<b>2033</b>	<b>2034</b>
<b>Tax Increment Year</b>			<b>2024</b>	<b>2025</b>	<b>2026</b>	<b>2027</b>	<b>2028</b>	<b>2029</b>	<b>2030</b>	<b>2031</b>	<b>2032</b>	<b>2033</b>
<b>Revenues</b>												
<b>Incremental Tax Revenues to Agency</b>												
	<b>Total</b>	<b>NPV</b>										
Davis County	\$98,173	\$75,844	\$9,915	\$9,870	\$9,828	\$9,805	\$9,795	\$9,792	\$9,792	\$9,792	\$9,792	\$9,792
Multicounty Assessing & Collecting Levy	\$1,278	\$988	\$129	\$129	\$128	\$128	\$128	\$128	\$128	\$128	\$128	\$128
County Assessing & Collecting Levy	\$11,164	\$8,625	\$1,127	\$1,122	\$1,118	\$1,115	\$1,114	\$1,114	\$1,114	\$1,114	\$1,114	\$1,114
Davis County School District	\$530,750	\$410,029	\$53,602	\$53,360	\$53,135	\$53,010	\$52,953	\$52,938	\$52,938	\$52,938	\$52,938	\$52,938
South Weber City	\$226,685	\$175,125	\$22,893	\$22,790	\$22,694	\$22,641	\$22,617	\$22,610	\$22,610	\$22,610	\$22,610	\$22,610
Weber Basin Water Conservancy District	\$17,044	\$13,167	\$1,721	\$1,714	\$1,706	\$1,702	\$1,700	\$1,700	\$1,700	\$1,700	\$1,700	\$1,700
Davis County Mosquito Abatement District	\$8,352	\$6,452	\$843	\$840	\$836	\$834	\$833	\$833	\$833	\$833	\$833	\$833
Central Weber Sewer Improvement District	\$44,570	\$34,432	\$4,501	\$4,481	\$4,462	\$4,452	\$4,447	\$4,446	\$4,446	\$4,446	\$4,446	\$4,446
County Library	\$19,941	\$15,406	\$2,014	\$2,005	\$1,996	\$1,992	\$1,990	\$1,989	\$1,989	\$1,989	\$1,989	\$1,989
<b>Total</b>	<b>\$957,957</b>	<b>\$740,067</b>	<b>\$96,746</b>	<b>\$96,310</b>	<b>\$95,904</b>	<b>\$95,679</b>	<b>\$95,576</b>	<b>\$95,549</b>	<b>\$95,549</b>	<b>\$95,549</b>	<b>\$95,549</b>	<b>\$95,549</b>
<b>Expenditures</b>												
	<b>Total</b>	<b>NPV</b>										
<i>Redevelopment Agency Administrative Percent</i>			2.5%	2.5%	2.5%	2.5%	2.5%	2.5%	2.5%	2.5%	2.5%	2.5%
Administrative Costs	(\$23,949)	(\$18,502)	(\$2,419)	(\$2,408)	(\$2,398)	(\$2,392)	(\$2,389)	(\$2,389)	(\$2,389)	(\$2,389)	(\$2,389)	(\$2,389)
<i>Davis County Administrative Percent (Library &amp; County)</i>			2.5%	2.5%	2.5%	2.5%	2.5%	2.5%	2.5%	2.5%	2.5%	2.5%
Administrative Costs	(\$2,655)	(\$2,281)	(\$298)	(\$297)	(\$296)	(\$295)	(\$295)	(\$295)	(\$295)	(\$295)	(\$295)	(\$295)
<i>Housing Percent</i>			10.0%	10.0%	10.0%	10.0%	10.0%	10.0%	10.0%	10.0%	10.0%	10.0%
Housing Costs	\$0	\$0	\$0	\$0	\$0	\$0	\$0	\$0	\$0	\$0	\$0	\$0
<i>Infrastructure Costs</i>												
Canal Reroute and Piping Main Site	(\$546,920)	(\$464,101)	(\$94,029)	(\$93,606)	(\$93,210)	(\$92,992)	(\$92,892)	(\$80,191)				
Inventory Lot Public Improvements	(\$225,647)	(\$155,871)	\$0	\$0	\$0	\$0	\$0	(\$12,674)	(\$92,865)	(\$92,865)	(\$27,243)	
<b>Remaining Increment for Project Area Development</b>	<b>\$158,487</b>	<b>\$99,312</b>	<b>\$0</b>	<b>\$0</b>	<b>\$0</b>	<b>\$0</b>	<b>\$0</b>	<b>\$0</b>	<b>\$0</b>	<b>\$0</b>	<b>\$65,622</b>	<b>\$92,865</b>

<b>Cap on Tax Increment to Agency</b>	
Davis County	\$98,173
Multicounty Assessing & Collecting Levy	\$1,278
County Assessing & Collecting Levy	\$11,164
Davis County School District	\$530,750
South Weber City	\$226,685
Weber Basin Water Conservancy District	\$17,044
Davis County Mosquito Abatement District	\$8,352
Central Weber Sewer Improvement District	\$44,570
County Library	\$19,941
<b>Total</b>	<b>\$957,957</b>