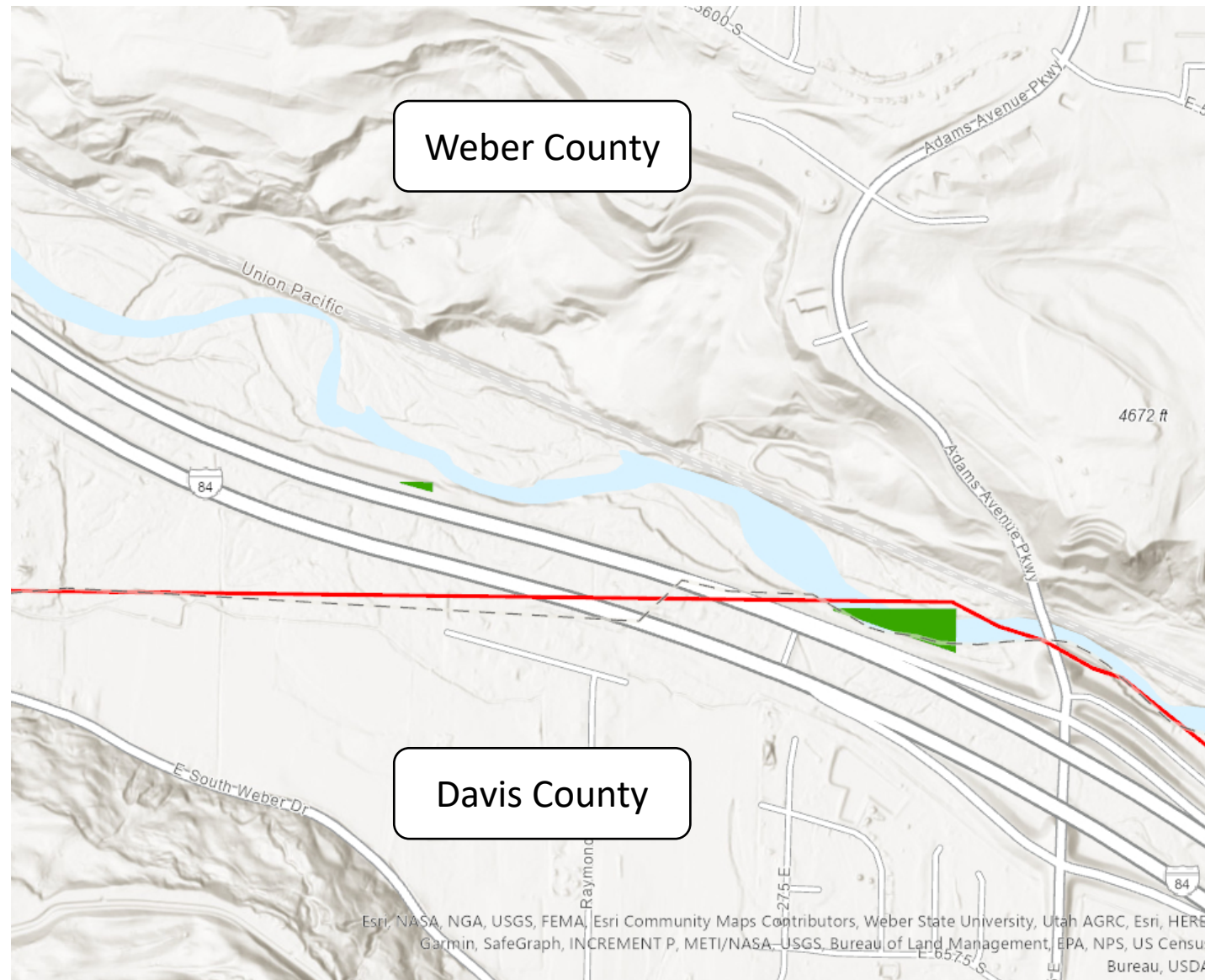


PROPOSED LAND ACQUISITION ALONG THE WEBER RIVER



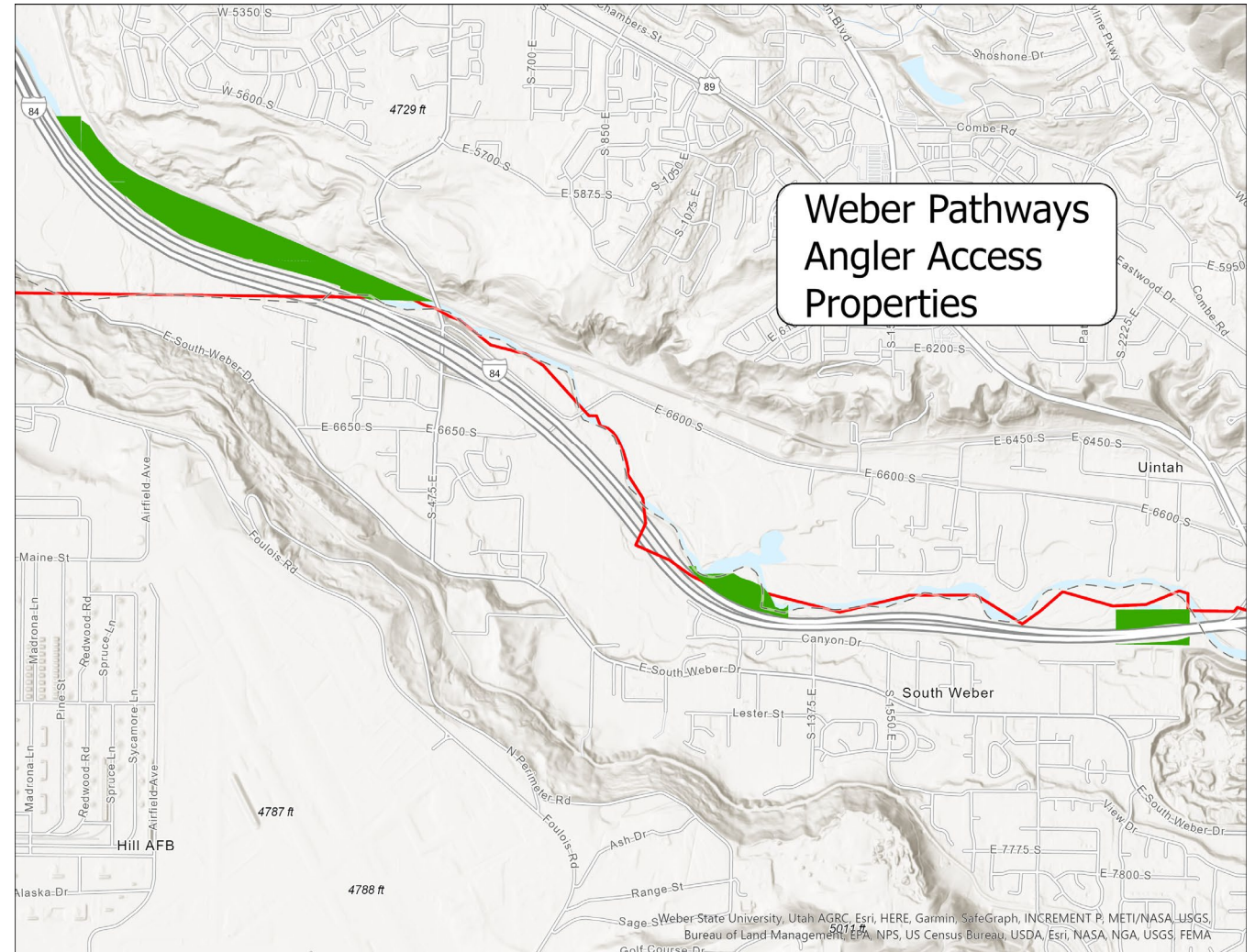
Utah Division of
Wildlife Resources

LOCATION OF PROPOSED LAND ACQUISITION



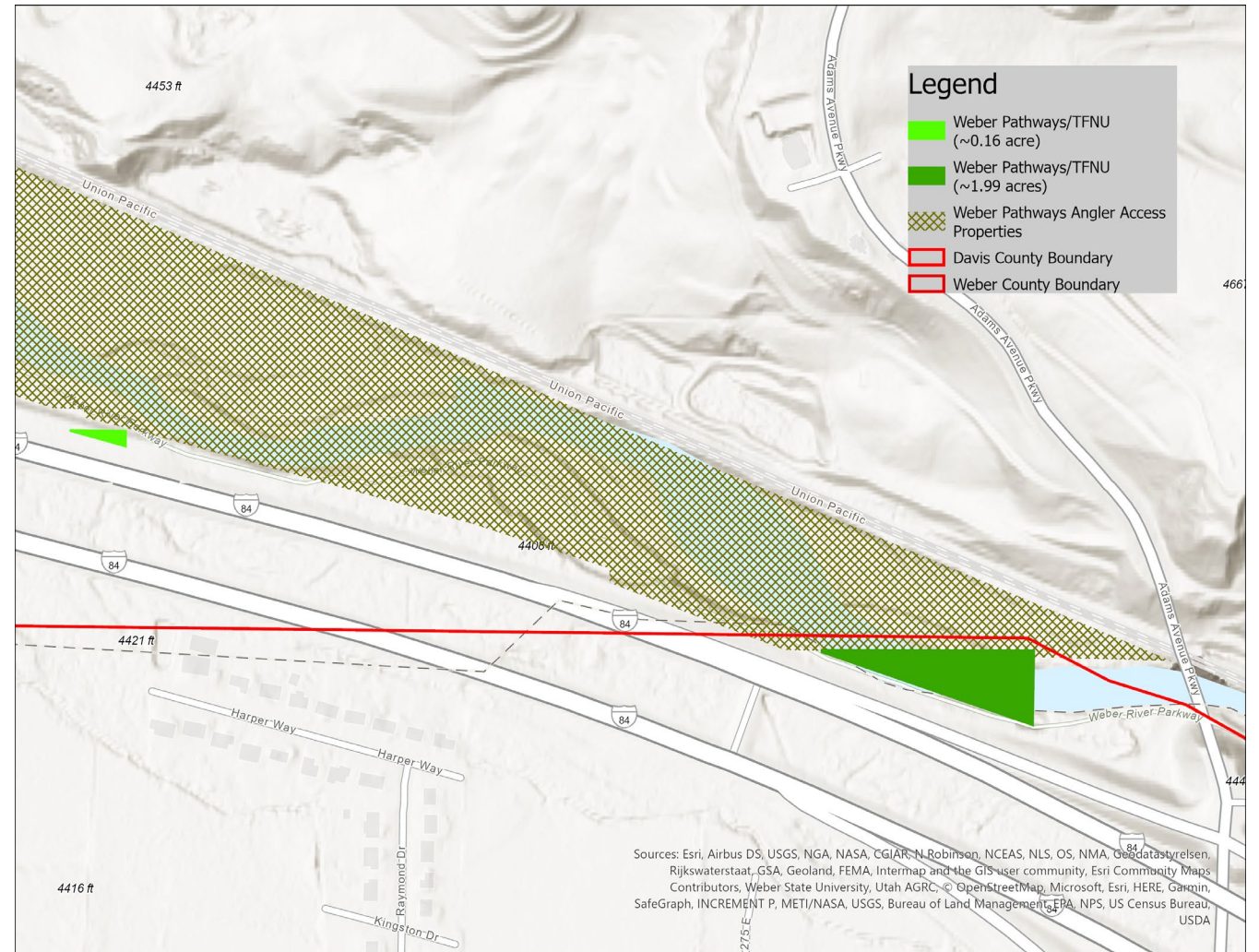
WEBER PATHWAYS ANGLER ACCESS AREA

- Currently contains approximately 42.70 acres
- Managed specifically for angler access and outdoor recreation opportunities for the public



PARCELS TO BE ACQUIRED

- UDWR proposes to acquire 1 parcel in Weber Co., and acquire 1 parcel acres in Davis Co.
 - Weber Co.: ~0.16 ac. from private to state
 - Davis Co.: ~1.99 ac. from private to state





THANK
YOU

QUESTIONS?



Utah Division of
Wildlife Resources